

Addendum to Appropriate Assessment (AA)

Natura Impact Report of Proposed Material Alterations to the Draft County Donegal Development Plan 2018-2024

In Line with the Requirements of Article 6 (3) Of the EU Habitats Directive



**Comhairle Contae
Dhún na nGall**
Donegal County Council

February 2018

TABLE OF CONTENTS

- 1 INTRODUCTION..... 1**
 - 1.1 BACKGROUND..... 1
 - 1.2 BRIEF DESCRIPTION OF PROCESS 1
- 2 PROPOSED MATERIAL ALTERATIONS TO THE DRAFT CDP..... 3**
- 3 ADDENDUM TO APPROPRIATE ASSESSMENT 4**
 - 3.1 STAGE 1 AA SCREENING 4
 - 3.2 STAGE 2 APPROPRIATE ASSESSMENT..... 4
 - 3.3 IDENTIFICATION OF EUROPEAN SITES THAT MAY BE AFFECTED 5
 - 3.4 SUMMARY FINDINGS OF STAGE 2 ASSESSMENT 6
- 4 CONCLUSION 8**
 - 4.1 CONCLUSION OF STAGE 2 – APPROPRIATE ASSESSMENT & NATURA IMPACT REPORT..... 8
 - 4.2 APPROPRIATE ASSESSMENT CONCLUSION 8

LIST OF FIGURES

Figure 3.1: European sites within County Donegal and a 15km Buffer zone.....6

LIST OF TABLES

Table A.1: Proposed Material Alterations A1

Table D.1: Impact Assessment Screening Matrix for Proposed Material Alterations to the Draft CDP 2018-2024 D1

LIST OF APPENDICES

Appendix A: Table of Proposed Material Alterations to the Draft County Donegal Development Plan 2018-2024

Appendix B: Maps of Proposed Material Alterations to the Draft County Donegal Development Plan 2018-2024

Appendix C: Maps of Settlements with 15km Buffer zones

Appendix D: Impact Assessment Screening Matrix for Proposed Material Alterations to Draft CDP 2018-2024

1 Introduction

1.1 Background

Donegal County Council is preparing a new County Donegal Development Plan 2018–2024 (hereinafter referred to as the Draft CDP). This will replace the existing County Donegal Development Plan 2012–2018 (as varied). The Draft CDP is being prepared under the provisions of the Planning and Development Act 2000 (as amended) to provide for sustainable development and improvement of the environmental, social, economic and cultural assets of the County.

This document is an addendum to the *Appropriate Assessment Natura Impact Report of Draft County Donegal Development Plan 2018 – 2024 (May 2017)*. The Draft CDP, along with an Appropriate Assessment and a Strategic Environmental Assessment of the Draft CDP and the Chief Executive's Report, was considered by Elected Members of Donegal County Council at an adjourned Council meeting on 13th December 2017. The Members resolved to make the Plan subject to a number of proposed alterations, some of which are 'Material Alterations'.

As part of the iterative process of preparing the Draft County Development Plan, the proposed Material Alterations to the Draft CDP are subject to Habitats Directive Appropriate Assessment. The *Appropriate Assessment Natura Impact Report of Draft County Donegal Development Plan 2018 – 2024 (May 2017)* examined and evaluated the likely significant effects of the Draft CDP on the Natura 2000 network in the zone of influence of the plan. This Addendum report assesses the likelihood of significant effects resulting from proposed Material Alterations to the Draft CDP. It supplements and should be read in conjunction with the Natura Impact Report (NIR) in support of Stage 2 Appropriate Assessment of the Draft CDP, and the Strategic Environmental Assessment (SEA).

The findings and content of this addendum, in conjunction with the *Appropriate Assessment Natura Impact Report of Draft County Donegal Development Plan 2018 – 2024 (May 2017)* will inform the Appropriate Assessment of the final County Development Plan at adoption stage. A Statement of Appropriate Assessment, along with a conclusion statement, will be included in the written statement of the County Development Plan, when made.

1.2 Brief Description of Process

Stage 1 Screening of the Draft CDP was completed and the 'Draft County Donegal Development Plan 2018-2024 Final Screening for Appropriate Assessment (AA)' report issued in August 2016. The Screening Report was circulated to relevant statutory authorities as part of regional, national and transboundary consultations. These included

- Environmental Protection Agency (EPA)
- Department of Housing, Planning and Local Government
- Department of Agriculture, Food and the Marine
- Department of Communications, Climate Change and Natural Resources
- Development Applications Unit, Department of Arts, Heritage, Regional, Rural and Gaeltacht Affairs
- National Parks and Wildlife Service, Glenveagh National Park
- National Parks & Wildlife Service, Department of Arts, Heritage, Regional, Rural and the Gaeltacht Affairs
- Leitrim and Sligo County Councils
- Strategic Planning Division, Department of the Environment, Northern Ireland
- Northern Ireland Environment Agency
- Fermanagh & Omagh District Council
- Derry City & Strabane District Council
- Causeway Coast and Glens Borough Council

Screening of the Draft CDP highlighted the significant number of protected species and habitats within County Donegal, with European sites comprising approximately 18.5% of all land cover of the County. Potentially significant affects of the Plan on European sites, either alone or in combination with other projects or plans, have been assessed in the context of the European sites' qualifying interests and possible effects on the integrity of the Natura network. In light of the information collated above, and exercising the precautionary principle, it could not be concluded beyond reasonable scientific doubt on the basis of the screening assessment that there would be no significant affects on European sites within the zone of influence of the Plan.

It was therefore concluded that the Draft CDP should proceed to Stage 2 Appropriate Assessment, including the preparation of a Natura Impact Report (NIR).

A NIR was prepared in May 2017 to support the AA of the Draft County Donegal Development Plan 2018-2024 and concurrently a Strategic Environmental Assessment (SEA) was prepared in compliance with the requirements of the SEA Directive. The Appropriate Assessment Report and Natura Impact Report concluded a Finding of No Significant Effects following the completion of Stage 2 of the process. Any potential significant impact on European sites and the integrity of the Natura 2000 network was mitigated against through amendments of existing policies and objectives, and the addition of a number of additional policies and as a result, there was no requirement to proceed to Stage 3 of the AA Process.

Comments on the environmental assessments (AA and Environmental Report) were invited during a period of public consultation from 19^h May 2017 to 1st September 2017. A total of 312 submissions were made including 20 submissions by prescribed authorities, 275 submissions by the general public, 8 by elected members and groupings of elected members and a number of cross-directorate comments. Following a review of these submissions a number of material alterations were recommended in the Chief Executive's Report and proposed by the Elected Members at an adjourned Council meeting on 13th December 2017. In total there are 40 proposed material alterations to the Draft County Development Plan which are to be assessed in accordance with the requirements of Article 6(3) of the EU Habitats Directive (Directive 92/43/EEC) in this addendum report. As described in Section 3.1 of this Report, 6 of these material alterations were screened out at Stage 1 AA Screening and the remaining 34 were brought forward to Stage 2 Appropriate Assessment.

2 Proposed Material Alterations to the Draft CDP

Descriptions of the material alterations are set out in the document *Proposed Material Alterations to Draft County Donegal Development Plan 2108-2024 (February 2018)*. A total of 40 material amendments to the Draft CDP have been proposed, of which 34 require an appropriate assessment of their likely significant effects on the conservation objectives of European sites i.e. on SACs or SPAs, and on the integrity of the Natura network of European sites before any decision can be made to allow that plan or project to proceed.

Appropriate Assessment (AA) must be fully integrated with the various stages of the development plan process in order to ensure that the Plan does not have significant adverse effects on European Sites. AA is an iterative process helping to inform the policies and objectives of the Draft CDP, and allows alternatives to be appraised early in the planning process, particularly in relation to the Natura 2000 network of sites. The legislative context and the process of AA has been fully set out in the NIR of the Draft CDP.

The proposed Material Alterations to the Draft CDP detail changes to the scope of the Plan as well as the policies and objectives contained within. A detailed account of the proposed material alterations to the Draft CDP are set out in Table A.1 in Appendix A of this Report and accompanying Maps are contained in Appendix B.

In summary, some of the material alterations relate to changes in settlement framework or land use zoning maps for a number of towns or villages, including the addition of one settlement as a rural town. Other alterations are intended to ensure that housing land supply is consistent with the Housing Land Requirement (HLR) provided for in the Draft CDP, and to encourage the sustainable growth of towns in a sequential manner outwards from the core so as to make best use of existing and planned infrastructure and to consolidate and strengthen urban form. The alterations to settlement framework boundaries will not result in any net increase in population uplift as set out in the Draft CDP.

Other alterations relate to consideration of lands for Natural Resource Development (Wind Energy). Sites have been proposed for consideration for wind energy development, and one site for augmentation to existing windfarms. Site selection is guided by evidential-led methodology as set out in the Wind Energy Guidelines, and lands proposed are not within European sites.

Several objectives and policies have also been added or amended. These relate primarily to housing (in particular provision of social housing), supporting the marine sector, promotion of measures to reduce energy demand and greenhouse gas emissions; and adaptation to climate change. A number of these material alterations are likely to have positive environmental affects and explicitly require compliance with the Habitats Directive and environmental considerations.

3 Addendum to Appropriate Assessment

3.1 Stage 1 AA Screening

Stage 1 Screening for Appropriate Assessment (AA) of the proposed Material Alterations (40 no.) to the Draft County Donegal Development Plan 2018–2024 (Draft CDP) was carried out in December 2017 (*Addendum to Appropriate Assessment (AA) Screening of Draft County Donegal Development Plan 2018-2024*).

The purpose of the screening exercise is to determine whether the proposed Material Alterations to the Draft CDP 2018-2024 could have significant effects on the Natura 2000 network of European sites within the zone of influence of the Plan, either alone or in combination with other plans or projects, and consider whether these impacts are likely to be significant. In undertaking the screening assessment the precautionary principle has been applied. Due to the strategic nature of the Draft CDP, the likely impacts arising due to the material alterations on European sites may be uncertain. In such circumstances the material alterations are brought forward for detailed consideration in Stage 2 AA.

It has been concluded that six (6 No.) of the proposed Material Alterations to the Draft CDP 2018-2024 are not foreseen to give rise to any significant adverse effects on designated European sites, alone or in combination with other plans or projects and consequently, a Stage 2 AA is not required for those Material Alterations (Material Alterations Reference Numbers 3, 7, 16, 25, 27 and 31 in Table A.1). This evaluation is made in view of the conservation objectives of the habitats or species for which these sites have been designated.

Notwithstanding the above, in relation to the remaining 34 proposed Material Alterations it has not been possible to conclude beyond reasonable scientific doubt that there is likely to be no significant impacts on the integrity of any of the Natura 2000 network of European sites arising from these Material Alterations. Therefore it is necessary to proceed to Stage 2 AA in regards to 34 of the proposed Material Alterations. The findings of the AA Screening of Material Alterations in relation to the need to proceed to Stage 2 AA is stated in Table A.1 of Appendix A in relation to each proposed material alteration.

3.2 Stage 2 Appropriate Assessment

The Appropriate Assessment of the Material Alterations in this addendum follows the same assessment process as set out in the Natura Impact Report (NIR) of the Draft CDP. Using the same methodology, an impact screening matrix (Table D.1 of Appendix D of this Report) sets out the assessment of each Material Alteration so as to determine the probability of significant impacts on the Natura 2000 network of European sites.

The impact screening matrix presents a detailed assessment under the following key headings:-

- CDP Policy/Objective
- European site that may be affected
- Potential Impact of policy/objective
- Risk of Significant Impact
- Potential for 'In Combination Impacts'
- Risk of Significant Combination Impacts
- Mitigation

Where further actions have been identified these are listed in 'Specific Action Required: Avoidance/Mitigation/Policy Deletion or Amendment'. These further actions feed directly into the drafting and amending of the policies and objectives of the Draft CDP. Where the assessment has

determined that there is potential for a significant impact on a European site or the integrity of Natura 2000 network, mitigation is set out in the last column.

3.3 Identification of European Sites That May Be Affected

For the purposes of AA, any European site within or adjacent to the plan or project area, and any European site within the likely zone of impact of the plan or project are to be included in the assessment. A distance of 15km is currently recommended as a minimum for inclusion in the case of plans, but European sites that are more than 15km from the plan must also be considered depending on the likely impacts of the plan or project, the sensitivities of the ecological receptors, and the potential for in combination effects. In considering relevant sites the precautionary principle must apply.

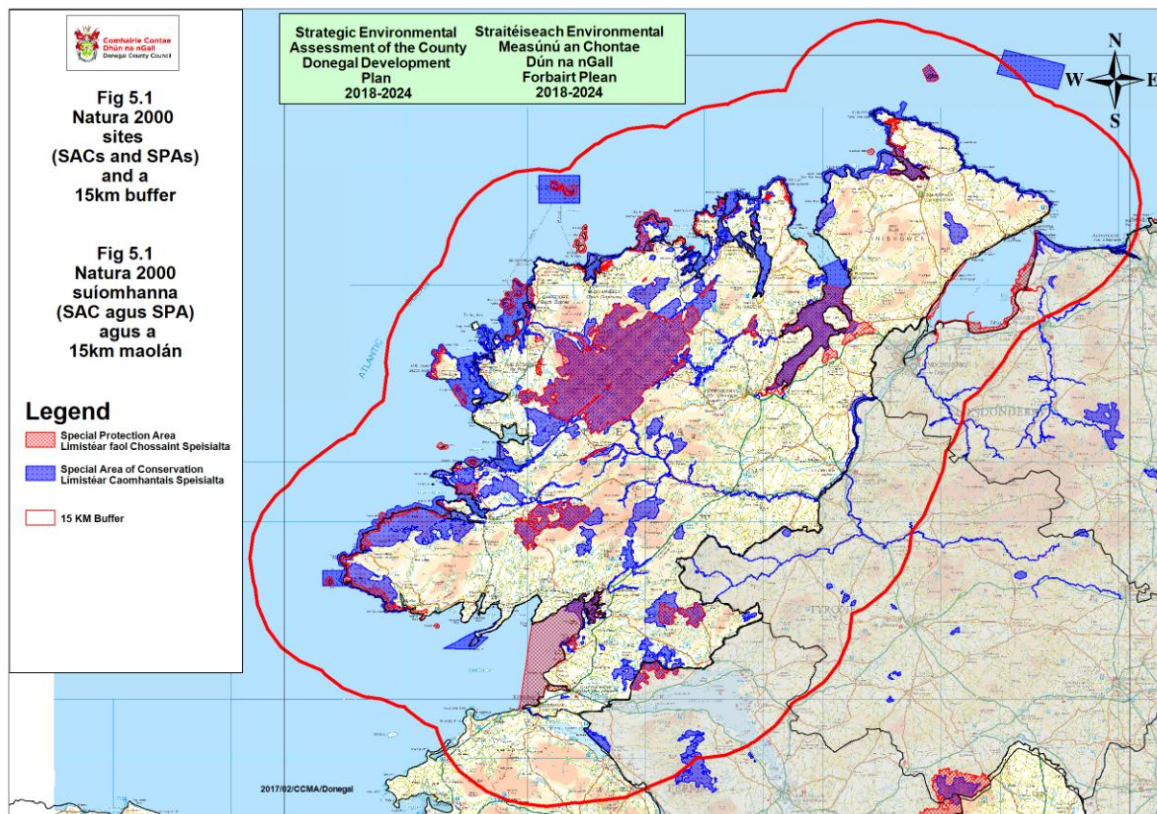
All relevant European sites in County Donegal and within a surrounding 15km buffer, or a wider zone of influence where potential impact is considered possible, have been tabulated in Appendix 1 of the *Appropriate Assessment Natura Impact Report of Draft County Donegal Development Plan 2018 – 2024 (May 2017)*. Datasets available on the National Parks and Wildlife Service website (<http://www.npws.ie>) and on the Joint Nature Conservation Committee/Department of Environment, Food and Rural Affairs website (<http://jncc.defra.gov.uk>) have been used to identify sites, and to collate site specific information. The following information has been included for each European site:

- Site code
- Site name
- Qualifying interests
- Conservation objectives
- Threats to site integrity

At present there are 47 SAC's and 26 SPA's within, or partly within the County. A further 41 SACs and 12 SPAs within the zone of influence of the plan have been included. These European sites are shown in the map in **Error! Reference source not found.** below reproduced from the Environmental Report Part D of the Draft CDP.

European sites within a 15km zone of influence of the proposed material alterations that relate to spatial changes at specific locations have also been identified and are shown in the maps in Appendix C of this addendum document. They have been considered in the assessment process for relevant material alterations.

Figure 3.1: European sites within County Donegal and a 15km Buffer zone



Source: Environmental Report Part D of the Draft CDP 2018-2024

3.4 Summary Findings of Stage 2 Assessment

Settlement frameworks and zonings have been chosen in the context of avoiding significant adverse impacts on European Sites in particular, and the wider environment. The proposed alterations to zonings and settlement framework boundaries are relatively minor in nature. In some instances e.g. where lands zoned residential have been changed to 'Strategic Residential Reserve', they are likely to result in reduced environmental pressures. In all cases existing effective mitigation is in place in the Draft CDP.

Proposed material alterations to policies and objectives vary in potential for impact on European sites. In some instances the changes are likely to be positive e.g. measures proposed to reduce energy demand and greenhouse gas emissions. Others are neutral or unlikely to give rise to any impact e.g. provision of social housing or balance of housing types. Where potential for impact is possible, sufficient mitigation has been included in the Draft CDP.

Some alterations relate to consideration of lands for Wind energy development. The sites selected and lands proposed are outside European sites and are unlikely to impact the qualifying interests of European sites in their vicinity particularly in the context of mitigation provided.

Although it is difficult to assess high level strategic proposals in detail, the Draft CDP explicitly commits to not having (or perpetuating) adverse effects on the integrity of the Natura 2000 Network or any European site and that all policies and objectives of the Plan and their implementation are subject to compliance with Article 6 of the Habitats Directive and to the full range of considerations that may apply for compliance with the Birds Directive, the EIA Directive, the SEA directive and relevant national legislation (see Part A: Appendix 1 Legal, Interpretation and Policy Context Section 1.4 of the Draft

CDP). In all instances there is sufficient existing mitigation in Draft CDP policies and objectives to ensure that significant impact on the Natura 2000 network of sites is unlikely.

4 Conclusion

4.1 Conclusion of Stage 2 – Appropriate Assessment & Natura Impact Report

This addendum to the Appropriate Assessment has been carried out on the proposed material alterations to the Draft County Donegal Development Plan 2018-2024 (the Draft CDP). The assessment involved Stages 1 and 2 of the AA process. Preparation of the assessment was undertaken using experienced ecological expertise to identify any risks of significant adverse effects on the Natura network of sites and general issues of concern for conservation in the County. A review of conservation objectives, qualifying interests and threats to site integrity for relevant European sites was undertaken to identify sites that might be impacted by the proposed material alterations to the Draft CDP.

Six (6 No.) of the proposed material alterations were screened out at Stage 1 on the basis of a finding of no potential for significant effects, and Stage 2 AA is not required (*Addendum to Appropriate Assessment (AA) Screening of Draft County Donegal Development Plan 2018-2024*).

A Stage 2 AA of all other remaining proposed Material Alterations (34 No.) was undertaken using methodology as set out in the *Appropriate Assessment Natura Impact Report of Draft County Donegal Development Plan 2018 – 2024*. A review of conservation objectives, qualifying interests and threats to site integrity for relevant European sites in the County and within the zone of influence of the relevant material alterations was undertaken to identify sites that might be impacted by policies/objectives in the Draft Plan.

Given the highly strategic nature of the Draft CDP it is not always possible to accurately determine likely potential impact on the Natura 2000 network. However, throughout the Draft CDP policies and objectives state that compliance with Article 6 of the Habitats Directive is required, and in all instances where there is potential for development to have significant adverse effects on any European site it will be subject to Appropriate Assessment. There are also many objectives and policies within the Draft CDP that are proactive in promoting protection of European sites and of annexed species in the wider environment. In addition, the Draft CDP explicitly commits to not having (or perpetuating) adverse effects on the integrity of the Natura 2000 Network or any European site and that all policies and objectives of the Plan and their implementation are subject to compliance with Article 6 of the Habitats Directive.

Cumulative and in combination effects were also considered in relation to other plans and programmes of relevance as set out in the NIR of the Draft CDP.

Therefore considering the proposed Material Alterations and the specific mitigation measures included to the Draft CDP to prevent impact, it was found that no direct, indirect or cumulative significant effects on the Natura 2000 network of sites or its integrity were likely.

4.2 Appropriate Assessment Conclusion

This addendum to the *Appropriate Assessment Natura Impact Report of the Draft County Donegal Development Plan 2018–2024* (NIR) concludes a Finding of No Significant Effects following the completion of Stage 2 of the process in relation to the proposed material alterations. Any potential impact on the Natura 2000 network has been mitigated against through amendments of existing policies and objectives, and the addition of a number of additional policies as identified in the NIR. As a result, there is no requirement to proceed to Stage 3 of the AA Process. This assessment should be read in conjunction with the NIR, the Draft CDP 2018-2024 and the accompanying SEA Environmental Report (together with subsequent addendums) prepared in compliance with the requirements of the SEA Directive and the Proposed Material Alterations to the Draft CDP 2018-2024.

Comments on the environmental assessments and on the proposed Material Alterations to the Draft CDP 2018-2024 are invited during a period of public consultation from 9th February 2018 for a period of 4 weeks.

APPENDIX A

Table of Proposed Material Alterations to the Draft County Donegal Development Plan 2018-2024

Table A.1: Proposed Material Alterations

Ref	Chapter/section in the Draft CDP	Proposed Material Alteration	Accompanied by Map (Yes/ No)	Requires Stage 2 AA
1	Chapter 2: Core Strategy (i) Table 2.3, Section 2.3.3 (ii) Table 15.2 of Part C (iii) Layer 3 Settlement Framework maps contained in Part C.	(i) Amend Table 2.3, Section 2.3.3 so as to insert Portnablagh as a named town within 'Layer 3 Rural Towns and open Countryside.' (ii) Amend Table 15.2 of Part C so as to insert Portnablagh as Map 15.60; and (iii) Insert an additional Settlement Framework map (as shown in Appendix A, map entitled 'Proposed Material Alteration 1') for Portnablagh into the Layer 3 Settlement Framework maps contained in Part C of the Draft CDP.	Yes (See Appendix B, map entitled 'Proposed Material Alteration 1')	Yes
2	Chapter 2: Core Strategy; insertion of new objective as CS-O-17 in section 2.10	Insert a new objective as CS-O-17 to read as follows: It is an objective of the Council to promote sustainable development and transportation strategies in urban and rural areas including the promotion of measures to: (i) Reduce energy demand in response to the likelihood of increases in energy and other costs due to long-term decline in non-renewable resources; (ii) Reduce anthropogenic greenhouse gas emissions; and (iii) Address the necessity of adaptation to climate change.'	No	Yes
3	Chapter 2: Core Strategy; insertion of new objective as CS-O-18 in section 2.10	Insert a new objective as CS-O-18 to read as follows: To review the location and extent of lands zoned 'Strategic Residential Reserve' to ensure the appropriate supply of long term housing landbank.	No	No
4	Chapter 2: Core Strategy; amendment of policy CS-P-5 in section 2.11	Amend policy CS-P-5 so that it reads as follows (new text shown in blue lettering): It is a policy of the Council to guide development of towns in a sequential manner, outwards from the core area in order to maximise the utility of existing and future infrastructure provision, promote the achievement of sustainability, avoid 'leap-frogging' to more remote areas	No	Yes

Ref	Chapter/section in the Draft CDP	Proposed Material Alteration	Accompanied by Map (Yes/ No)	Requires Stage 2 AA
		<p>and to make better use of under-utilised land. <i>This policy shall not apply to small scale business enterprises (excluding retail development) of circa 1 to 5 employees.</i></p> <p><i>Retail development on an out-of-centre site will be considered only in exceptional circumstances where the applicant can demonstrate and the planning authority is satisfied that there are no sites or potential sites either within the centre or on the edge of the centre that are (a) suitable, (b) available and (c) viable.</i></p>		
5	Chapter 6: Housing; insertion of new objective as HS-O-9 in the Housing Strategy, section 6.1.5	<p>Insert new objective as HS-O-8 to read as follows:</p> <p>It is an objective of the Council to explore opportunities to deliver necessary social housing to meet the needs of the County's rural population.</p>	No	Yes
6	Chapter 6: Housing; insertion of new policy HS-P-2 in the Housing Strategy, section 6.1.6	<p>Insert new policy as HS-P-2 to read as follows:</p> <p>It is a policy of the Council to consider opportunities to deliver necessary social housing at locations around (i) rural schools; (ii) smaller settlements and; (iii) traditional clachan settlement patterns; subject to wastewater services being appropriately delivered and maintained by Donegal County Council as part of a social housing scheme and subject to all other relevant objectives and policies of the plan, including environmental considerations and compliance with the Habitats Directive.</p>	No	Yes
7	Chapter 6: Housing; amendment of policy UB-P-5 in section 6.2.3	<p>Amend policy UB-P-5 so that it reads as follows (new text shown in blue lettering):</p> <p>It is the policy of the Council to guide urban residential development in a sequential manner, outwards from the core area in order to maximise the utility of existing and future infrastructure provision, promote the achievement of sustainability, avoid 'leap- frogging' to more remote areas and to make better use of underutilised land subject to compliance with Article 6 of the Habitats Directive (where applicable). <i>Housing development on an out-of-centre site will be considered only in exceptional circumstances where the applicant can demonstrate and the</i></p>	No	No

Ref	Chapter/section in the Draft CDP	Proposed Material Alteration	Accompanied by Map (Yes/ No)	Requires Stage 2 AA
		planning authority is satisfied that there are no sites or potential sites either within the centre or on the edge of the centre that are (a) suitable, (b) available and (c) viable.		
8	Chapter 6: Housing; Insertion of new policy as UB-P-29 in section 6.2.3	Insert new policy as UB-P-29 to read as follows: It is a policy of the Council that holiday home development will be considered within the settlement framework areas without the application of a restriction in terms of the balance between holiday homes and permanent homes (policy UB-P-24), subject to environmental and heritage designations and amenity considerations and where the applicant can demonstrate that the site is a brownfield site within the urban fabric of a settlement framework and its development for holiday home purposes is of a size and scale that would not be detrimental to the character of the settlement. A brownfield site is one that has been previously built upon. It excludes parks, recreation grounds, private or public open space, allotments, forestry lands/buildings agricultural lands and land where the remains of the previous use have blended into the landscape, or have been superseded by landuse zonings or lands of conservation value or amenity use.	No	Yes
9	Chapter 8; Natural Resource Development; Amendment of Map 8.2.1 (Wind Energy) in relation to lands at Derrykillev, Ballyshannon	Amend Map 8.2.1 (Wind Energy) (as shown in Appendix A, map entitled 'Proposed Material Alteration 9') so as to change the identification of the site of planning permission ref. no. 14/51400 from 'Not Acceptable' to 'Acceptable for Augmentation.'	Yes (See Appendix B, map entitled 'Proposed Material Alteration 9')	Yes
10	Chapter 8; Natural Resource Development; Map 8.2.1 (Wind Energy) in relation to lands at Derrykillev, Ballyshannon	Amend Map 8.2.1 (Wind Energy) (as shown in Appendix A, map entitled 'Proposed Material Alteration 10') to change the identification of lands in part of: Derrykillev, Croaghbressy, Carricknahorna, Cashelard, Corlea, Doobally, Behy, Knader, Coolcholly, Tullyhorky from 'Not Acceptable' to 'Open to Consideration'.	Yes (See Appendix B, map entitled 'Proposed Material Alteration 10')	Yes

Ref	Chapter/section in the Draft CDP	Proposed Material Alteration	Accompanied by Map (Yes/ No)	Requires Stage 2 AA
11	Chapter 8; Natural Resource Development; Map 8.2.1 (Wind Energy) In relation to lands at Altnapaste, Ballybofey	Amend Map 8.2.1 (Wind Energy) (as shown in Appendix A, map entitled 'Proposed Material Alteration 11') to change the identification of lands in the Altnapaste, Ballybofey area from 'Not Acceptable' to 'Open to Consideration.'	Yes (See Appendix B, map entitled 'Proposed Material Alteration 11')	Yes
12	Chapter 8; Natural Resource Development; Map 8.2.1 (Wind Energy) in relation to lands at Meenbog, Ballybofey	Amend Map 8.2.1 (Wind Energy) (as shown in Appendix A, map entitled 'Proposed Material Alteration 12') to change the identification of lands in the Meenbog, Ballybofey area from 'Not Acceptable' to 'Open to Consideration.'	Yes (See Appendix B, map entitled 'Proposed Material Alteration 12')	Yes
13	Chapter 8; Natural Resource Development; Map 8.2.1: Wind Energy In relation to lands at Drumenan/Killymasney, Newmills, Letterkenny	Amend Map 8.2.1 (Wind Energy) (as shown in Appendix A, map entitled 'Proposed Material Alteration 13') to change the identification of lands in the Drumenan/Killymasney, Newmills, Letterkenny area from 'Not Acceptable' to 'Open to Consideration.'	Yes (See Appendix B, map entitled 'Proposed Material Alteration 13')	Yes
14	Chapter 10: Marine Resource and Coastal Management; amendment to objective MRCM-O-1 at section 10.2	Amend objective MRCM-O-1 so that it reads as follows (new text shown in blue lettering): To maximise the social and economic potential of Donegal's marine sector by: <ul style="list-style-type: none"> ▪ Supporting the fishing and seafood sector by maintaining and improving harbour infrastructure (in accordance with the Councils Marine Services Capital Investment Programme) and facilitating seafood processing industries and ancillary service developments. ▪ Consolidating and strengthening our Marine Leisure sector by, protecting the recreational and environmental quality of our coastal areas, maintaining and upgrading existing and providing new marine access infrastructure (in accordance with the Councils Marine 	No	Yes

Ref	Chapter/section in the Draft CDP	Proposed Material Alteration	Accompanied by Map (Yes/ No)	Requires Stage 2 AA
		<p>Services Capital Investment Programme), facilitating ancillary onshore marine leisure developments, and marketing our marine tourism product.</p> <ul style="list-style-type: none"> ▪ Facilitating developments which enable the sustainable harnessing of the offshore energy resource. ▪ 'Supporting the offshore primary production sector of the aquaculture industry, subject to adequate environmental assessments and safeguards being provided to the satisfaction of the Council and to the avoidance of the development giving rise to an overbearing visual impact in the locality in which it is proposed.' 		
15	Chapter 10: Marine Resource and Coastal Management; amendment to policy MRCM-P-1 at section 10.3	<p>Amend policy MRCM-P-1 so that it reads as follows (new text shown in blue lettering, text for deletion shown in strikethrough):</p> <p>It is a policy of the Council to safeguard and enhance the roles of Killybegs, Greencastle, and Burtonport, and Inver as centres of fleet activity, seafood processing and ancillary services, and, to facilitate the diversification of such locations into new areas of appropriate investment and employment opportunities, including marine related economic activity.</p>	No	Yes
16	Map 12.1B, Letterkenny Land Use Zoning Map	Amend Map 12.1B (Land Use Zoning Map for Letterkenny) so as to change the zoning of lands at Kiltyoy, Letterkenny from 'Primarily Residential' to 'Strategic Residential Reserve' (as shown in Appendix A, map entitled 'Proposed Material Alteration 16').	Yes (See Appendix B, map entitled 'Proposed Material Alteration 16')	No
17	Map 13.1A, Buncrana Land Use Zoning Map	Amend Map 13.1A (Land Use Zoning Map for Buncrana) so as to change the zoning of lands at Clonbeg, Buncrana from 'Strategic Residential Reserve' to 'Residential (Phase 1)' (as shown in Appendix A, map entitled 'Proposed Material Alteration 17').	Yes (See Appendix B, map entitled 'Proposed Material Alteration 17')	Yes
18	Map 13.1A,	Amend Map 13.1A (Land Use Zoning Map for Buncrana) so as to change the zoning of lands at Cockhill Road, Buncrana from	Yes	Yes

Ref	Chapter/section in the Draft CDP	Proposed Material Alteration	Accompanied by Map (Yes/ No)	Requires Stage 2 AA
	Buncrana Land Use Zoning Map	'Amenity/Recreation' to 'Residential (Phase 1)' (as shown in Appendix A, Map entitled 'Proposed Material Alteration 18').	(See Appendix B, map entitled 'Proposed Material Alteration 18')	
19	Ailt an Chorráin (Burtonport) – Map 15.7	Amend Map 15.7 (as shown in Appendix A, map entitled 'Proposed Material Alteration 19') so as to extend the settlement framework boundary of Ailt an Chorráin (Burtonport).	Yes (See Appendix B, map entitled 'Proposed Material Alteration 19')	Yes
20	An Bun Beag-Doirí Beaga (Derrybeg)– Map 15.8	Amend Map 15.8 (as shown in Appendix A, map entitled 'Proposed Material Alteration 20') so as to extend the settlement framework boundary of An Bun Beag-Doirí Beaga (Derrybeg).	Yes (See Appendix B, map entitled 'Proposed Material Alteration 20')	Yes
21	An Fál Carrach (Falcarragh) – Map 15.10	Amend Map 15.10 (as shown in Appendix A, map entitled 'Proposed Material Alteration 21') so as to extend the settlement framework boundary of An Fál Carrach (Falcarragh).	Yes (See Appendix B, map entitled 'Proposed Material Alteration 21')	Yes
22	Ardara – Map 15.11	Amend Map 15.11 (as shown in Appendix A, map entitled 'Proposed Material Alteration 22') so as to extend the settlement framework boundary of Ardara.	Yes (See Appendix B map entitled 'Proposed Material Alteration 22')	Yes
23	Dunfanaghy – Map 15.14	Amend Map 15.14 (as shown in Appendix A, map entitled 'Proposed Material Alteration 23') so as to extend the settlement framework boundary of Dunfanaghy.	Yes (See Appendix B, map entitled 'Proposed Material Alteration 23')	Yes

Ref	Chapter/section in the Draft CDP	Proposed Material Alteration	Accompanied by Map (Yes/ No)	Requires Stage 2 AA
24	Glenties - Map 15.15	Amend Map 15.15 (as shown in Appendix A, map entitled 'Proposed Material Alteration 24') so as to extend the settlement framework boundary of Glenties.	Yes (See Appendix B, map entitled 'Proposed Material Alteration 24')	Yes
25	Lifford – Map 15.17	Amend Map 15.17 (as shown in Appendix A, map entitled 'Proposed Material Alteration 25') so as to extend the town centre boundary of Lifford.	Yes (See Appendix B, map entitled 'Proposed Material Alteration 25')	No
26	Lifford – Map 15.17	Amend Map 15.17 (as shown in Appendix A, map entitled 'Proposed Material Alteration 26') so as to extend the settlement framework boundary of Lifford.	Yes (See Appendix B, map entitled 'Proposed Material Alteration 26')	Yes
27	Raphoe – Map 15.21	Amend Map 15.21 (as shown in Appendix A, map entitled 'Proposed Material Alteration 27') so as to extend the settlement framework boundary of Raphoe.	Yes (See Appendix B, map entitled 'Proposed Material Alteration 27')	No
28	Anagaire (Annagry) – Map 15.22	Amend Map 15.22 (as shown in Appendix A, map entitled 'Proposed Material Alteration 28') so as to extend the settlement framework boundary of Anagaire (Annagry) and also to include an area of amenity along the coastline.	Yes (See Appendix B, map entitled 'Proposed Material Alteration 28')	Yes
29	Carrigans – Map 15.27	Amend Map 15.27 (as shown in Appendix A, map entitled 'Proposed Material Alteration 29') so as to extend the settlement framework boundary of Carrigans.	Yes (See Appendix B, map entitled 'Proposed Material	Yes

Ref	Chapter/section in the Draft CDP	Proposed Material Alteration	Accompanied by Map (Yes/ No)	Requires Stage 2 AA
			Alteration 29')	
30	Castlefinn- Map 15.29	Amend Map 15.29 (as shown in Appendix A, map entitled 'Proposed Material Alteration 30') so as to extend the settlement framework boundary of Castlefin.	Yes (See Appendix B, map entitled 'Proposed Material Alteration 30')	Yes
31	Convoy- Map 15.32	Amend Map 15.32 (as shown in Appendix A, map entitled 'Proposed Material Alteration 31') so as to extend the settlement framework boundary of Convoy	Yes (See Appendix B, map entitled 'Proposed Material Alteration 31')	No
32	Creelough – Map 15.33	Amend Map 15.33 (as shown in Appendix A, map entitled 'Proposed Material Alteration 32') so as to extend the settlement framework boundary of Creelough.	Yes (See Appendix B, map entitled 'Proposed Material Alteration 32')	Yes
33	Gort an Choire (Gortahork)– Map 15.42	Amend Map 15.42 (as shown in Appendix A, map entitled 'Proposed Material Alteration 33') so as to extend the settlement framework boundary of Gort an Choire (Gortahork).	Yes (See Appendix B, map entitled 'Proposed Material Alteration 33')	Yes
34	Killea – Map 15.43	Amend Map 15.43 (as shown in Appendix A, map entitled 'Proposed Material Alteration 34') so as to extend the settlement framework boundary of Killea.	Yes (See Appendix B, map entitled 'Proposed Material Alteration 34')	Yes
35	Killygordon – Map 15.44	Amend Map 15.44 (as shown in Appendix A, map entitled 'Proposed Material Alteration 35') so as to extend the settlement framework boundary of Killygordon	Yes (See Appendix B,	Yes

Ref	Chapter/section in the Draft CDP	Proposed Material Alteration	Accompanied by Map (Yes/ No)	Requires Stage 2 AA
			map entitled 'Proposed Material Alteration 35')	
36	Loch an Iúir Loughanure – Map 15.47	Amend Map 15.47 (as shown in Appendix A, map entitled 'Proposed Material Alteration 36') so as to extend the settlement framework boundary of Loch an Iúir (Loughanure)	Yes (See Appendix B, map entitled 'Proposed Material Alteration 36')	Yes
37	Manorcunningham – Map 15.48	Amend Map 15.48 (as shown in Appendix A, map entitled 'Proposed Material Alteration 37') so as to extend the settlement framework boundary of Manorcunningham	Yes (See Appendix B, map entitled 'Proposed Material Alteration 37')	Yes
38	Muff- Map 15.51	Amend Map 15.51 (as shown in Appendix A, map entitled 'Proposed Material Alteration 38') so as to extend the settlement framework boundary of Muff	Yes (See Appendix B, map entitled 'Proposed Material Alteration 38')	Yes
39	St. Johnston – Map 15.59	Amend Map 15.59 (as shown in Appendix A, map entitled 'Proposed Material Alteration 39') so as to extend the settlement framework boundary of St Johnston	Yes (See Appendix B, map entitled 'Proposed Material Alteration 39')	Yes
40	Insertion of new map at Culineen, Redcastle	Insert new map as map 15.60 (as shown in Appendix A, map entitled 'Proposed Material Alteration 40') and identify lands at Culineen, Redcastle currently in area identified as 'Open Countryside' and zone for 'multiple residential development'.	Yes (See Appendix B, map entitled 'Proposed Material Alteration 40')	Yes

APPENDIX B

Maps of Proposed Material Alterations to the Draft County Donegal Development Plan 2018-2024

APPENDIX C

Maps of Settlements with 15km Buffer zones

APPENDIX D

Addendum to AA Natura Impact Report

Impact Assessment Screening Matrix for Proposed Material Alterations to Draft CDP 2018-2024

Table D.1: Impact Assessment Screening Matrix for Proposed Material Alterations to the Draft CDP 2018-2024

Ref.	Policy/ Objective	European Sites That May Be Affected	Potential Impact of Policy /Objective	Risk of Significant Impact	Potential of In- Combination Impacts	Risk of Significant In- Combination Impacts'	Mitigation
PART A THE STRATEGIC PLAN							
Chapter 2 Core Strategy							
Core Strategy Objectives							
1	Amendment to Table 2.3, Table 15.2 and to include a new Map 15.60 to include Portnablagh as a named town within 'Layer 3 Rural Towns and open Countryside.'	Potentially all sites in the vicinity of the settlement framework boundary of Portnablagh.	Potential impact on European sites through infrastructure development, land take, disturbance, eutrophication etc. However, although the settlement is an addition to the rural town network, the settlement framework area is already developed and well established.	Potential	Potential	In combination effects are possible but unlikely.	<p>The zoning of Portnablagh as a settlement framework in the Draft CDP is evidence based in relation to environmental considerations and capacity to absorb proposed development. The analysis of provision and availability of infrastructure has allowed development to be directed to appropriate areas and to avoid the most vulnerable and sensitive areas.</p> <p>The settlement framework is remote from the qualifying interests of marine European sites in the vicinity.</p> <p>In particular the provisions of Natural Heritage objectives and policies set out in the Part B of the Draft CDP provide for</p>

Ref.	Policy/ Objective	European Sites That May Be Affected	Potential Impact of Policy /Objective	Risk of Significant Impact	Potential of In- Combination Impacts	Risk of Significant In- Combination Impacts'	Mitigation
							<p>compliance with the requirements of Article 6 of the Habitats Directive.</p> <p>Mitigation is provided through Natural Heritage and Water and Environmental Services, objectives and policies.</p>
<p>Specific Action Required: Avoidance/Mitigation/Policy Deletion OR Amendment</p> <p>Objectives and policies of Part C Towns are subject to all other policies and objectives of the Draft CDP.</p> <p>Natural Heritage Policies and Objectives NH-O-1 to NH-O-6, NH-O-8 to NH-O-11, NH-P-1 to NH-P-5, NH-P-9, NH-P-10 and NH-P-18 ensure compliance with Article 6 of the Habitats Directive, provide protection and promote conservation of European sites and the integrity of the Natura 2000 network.</p> <p>The following policies also ensure either explicit compliance with Article 6 of the Habitats Directive to protect European sites or protection of the wider environment: WES-O-4, WES-O-5, WES-O-6, WES-P-4 and WES-P-8.</p> <p>The Plan explicitly commits to not having (or perpetuating) adverse effects on the integrity of the Natura 2000 Network or any European site and that all policies and objectives of the Plan and their implementation are subject to compliance with Article 6 of the Habitats Directive and to the full range of considerations that may apply for compliance with the Birds Directive, the EIA Directive, the SEA directive and relevant national legislation (see Part A: Appendix 1 Legal, Interpretation and Policy Context Section 1.4 of the Draft CDP).</p>							
2	CS-O-17	Potentially all sites within the zone of influence of the Plan.	May have beneficial effect through reduced energy demand and reduction of emissions.	Potentially positive	Potentially positive	In combination effects are possible and likely to be positive.	<p>CS-O-17 is likely to have generally positive environmental effects. When specific measures are proposed they will be considered in terms of potential impact on European sites.</p> <p>Donegal County Council will ensure that</p>

Ref.	Policy/ Objective	European Sites That May Be Affected	Potential Impact of Policy /Objective	Risk of Significant Impact	Potential of In- Combination Impacts	Risk of Significant In- Combination Impacts'	Mitigation
							<p>implementation of individual objectives and policies give sufficient consideration to environmental issues, and in all instances ensure compliance with Article 6 of the Habitats Directive in having regard to the relevant conservation objectives, qualifying interests and threats to the integrity of European sites.</p> <p>Mitigation is provided through Natural Heritage objectives and policies.</p>
<p>Specific Action Required: Avoidance/Mitigation/Policy Deletion OR Amendment</p> <p>Natural Heritage Policies and Objectives NH-O-1 to NH-O-6, NH-O-8 to NH-O-11, NH-P-1 to NH-P-5, NH-P-9, NH-P-10 and NH-P-18 ensure compliance with Article 6 of the Habitats Directive, provide protection and promote conservation of European sites and the integrity of the Natura 2000 network.</p> <p>CS-O-7 stipulates that investment in infrastructure will be subject to environmental considerations.</p>							
<p>Core Strategy Policies</p>							
4	CS-P-5	Potentially all sites within the settlement boundaries and within the zone of influence of the settlements.	Potential impact on European sites through infrastructure development, land take, disturbance etc. Amendment imposes restriction on retail	Potential	Potential	In combination effects are possible but unlikely.	It is not possible to assess in detail the mitigation required by this high level strategic policy. However, in general in implementing such policies, avoidance on or near protected areas should be implemented, or where this is not possible,

Ref.	Policy/ Objective	European Sites That May Be Affected	Potential Impact of Policy /Objective	Risk of Significant Impact	Potential of In- Combination Impacts	Risk of Significant In- Combination Impacts'	Mitigation
			developments in out of centre sites.				<p>favouring of infrastructure that carries a lower risk of damage to protected areas should be emphasised in plans.</p> <p>Sequential development will mitigate pressures on European sites through optimising use of brownfield and serviced areas.</p> <p>Mitigation is provided through Natural Heritage objectives and policies and Core Strategy policies.</p>
<p>Specific Action Required: Avoidance/Mitigation/Policy Deletion OR Amendment</p> <p>Natural Heritage Policies and Objectives NH-O-1 to NH-O-6, NH-O-8 to NH-O-11, NH-P-1 to NH-P-5, NH-P-9, NH-P-10 and NH-P-18 ensure compliance with Article 6 of the Habitats Directive, provide protection and promote conservation of European sites and the integrity of the Natura 2000 network.</p> <p>CS-P-1, CS-P-2, CS-P-3 and CS-P-4 stipulate that development will be subject to environmental considerations.</p> <p>The Plan explicitly commits to not having (or perpetuating) adverse effects on the integrity of the Natura 2000 Network or any European site and that all policies and objectives of the Plan and their implementation are subject to compliance with Article 6 of the Habitats Directive and to the full range of considerations that may apply for compliance with the Birds Directive, the EIA Directive, the SEA directive and relevant national legislation (see Part A: Appendix 1 Legal, Interpretation and Policy Context Section 1.4 of the Draft CDP).</p>							

Ref.	Policy/ Objective	European Sites That May Be Affected	Potential Impact of Policy /Objective	Risk of Significant Impact	Potential of In- Combination Impacts	Risk of Significant In- Combination Impacts'	Mitigation
PART B: OBJECTIVES AND POLICIES OF THE PLAN							
Chapter 6 Housing							
Housing Strategy Objectives							
5	HS-O-9	Potentially all sites within the zone of influence of the social housing developments.	Potential impact on European sites through infrastructure development, land take, disturbance etc.	Potential	Potential	In combination effects are possible but unlikely.	<p>It is not possible to assess in detail the mitigation required by this high level strategic objective. However, in implementing the Housing Strategy, avoidance on or near protected areas should be implemented, or where this is not possible, favouring of infrastructure that carries a lower risk of damage to protected areas should be emphasised in the Plan. In particular siting of infrastructure should take full account of risks identified in the relevant River Basin Management Plan and in any relevant Fresh Water Pearl Mussel Sub-basin Plan.</p> <p>When a specific development is proposed it will be considered in terms of its potential impact on European sites.</p> <p>Donegal County Council</p>

Ref.	Policy/ Objective	European Sites That May Be Affected	Potential Impact of Policy /Objective	Risk of Significant Impact	Potential of In- Combination Impacts	Risk of Significant In- Combination Impacts'	Mitigation
							<p>will ensure that implementation of individual objectives and policies gives sufficient consideration to environmental issues, and in all instances ensure compliance with Article 6 of the Habitats Directive in having regard to the relevant conservation objectives, qualifying interests and threats to the integrity of European sites.</p> <p>Mitigation is provided through Water and Environmental Services, and Natural Heritage objectives.</p>
<p>Specific Action Required: Avoidance/Mitigation/Policy Deletion OR Amendment</p> <p>Natural Heritage Policies and Objectives NH-O-1 to NH-O-6, NH-O-8 to NH-O-11, NH-P-1 to NH-P-5, NH-P-9, NH-P-10 and NH-P-18 ensure compliance with Article 6 of the Habitats Directive, provide protection and promote conservation of European sites and the integrity of the Natura 2000 network.</p> <p>The following policies also ensure either explicit compliance with Article 6 of the Habitats Directive to protect European sites or protection of the wider environment: WES-O-4, WES-O-5, WES-O-6, WES-P-4, WES-P-8.</p> <p>The Plan explicitly commits to not having (or perpetuating) adverse effects on the integrity of the Natura 2000 Network or any European site and that all policies and objectives of the Plan and their implementation are subject to compliance with Article 6 of the Habitats Directive and to the full range of considerations that may apply for compliance with the Birds Directive, the EIA Directive, the SEA directive and relevant national legislation (see Part A: Appendix 1 Legal, Interpretation and Policy Context Section 1.4 of the draft CDP).</p>							

Ref.	Policy/ Objective	European Sites That May Be Affected	Potential Impact of Policy /Objective	Risk of Significant Impact	Potential of In- Combination Impacts	Risk of Significant In- Combination Impacts'	Mitigation
Housing Strategy Policies							
6	HS-P-2	Potentially all sites in the zone of influence of social housing developments.	Potential impact on European sites through infrastructure development, land take, disturbance etc.	Potential	Potential	In combination effects are possible but unlikely.	<p>It is not possible to assess in detail the mitigation required by this high level strategic policy. However, in implementing the Housing Strategy, avoidance on or near protected areas should be implemented, or where this is not possible, favouring of infrastructure that carries a lower risk of damage to protected areas should be emphasised in the Plan. In particular siting of infrastructure should take full account of risks identified in the relevant River Basin Management Plan and in any relevant Fresh Water Pearl Mussel Sub-basin Plan.</p> <p>When a specific development is proposed it will be considered in terms of its potential impact on European sites.</p> <p>HS-P-2 explicitly requires provision of wastewater services by Donegal County Council and</p>

Ref.	Policy/ Objective	European Sites That May Be Affected	Potential Impact of Policy /Objective	Risk of Significant Impact	Potential of In- Combination Impacts	Risk of Significant In- Combination Impacts'	Mitigation
							<p>compliance with the Habitats Directive.</p> <p>Donegal County Council will ensure that implementation of individual objectives and policies gives sufficient consideration to environmental issues, and in all instances ensure compliance with Article 6 of the Habitats Directive in having regard to the relevant conservation objectives, qualifying interests and threats to the integrity of European sites.</p> <p>Mitigation is provided through Natural Heritage and Water and Environmental Services, objectives and policies.</p>
<p>Specific Action Required: Avoidance/Mitigation/Policy Deletion OR Amendment</p> <p>Natural Heritage Policies and Objectives NH-O-1 to NH-O-6, NH-O-8 to NH-O-11, NH-P-1 to NH-P-5, NH-P-9, NH-P-10 and NH-P-18 ensure compliance with Article 6 of the Habitats Directive, provide protection and promote conservation of European sites and the integrity of the Natura 2000 network.</p> <p>The following policies also ensure either explicit compliance with Article 6 of the Habitats Directive to protect European sites or protection of the wider environment: WES-O-4, WES-O-5, WES-O-6, WES-P-4 and WES-P-8.</p> <p>The Plan explicitly commits to not having (or perpetuating) adverse effects on the integrity of the Natura 2000 Network or any European site and that all policies and objectives of the Plan and their implementation are subject to compliance with Article 6 of the Habitats Directive and to the full range of considerations that may apply for compliance with the Birds Directive, the EIA Directive, the SEA directive and relevant national legislation (see Part A:</p>							

Ref.	Policy/ Objective	European Sites That May Be Affected	Potential Impact of Policy /Objective	Risk of Significant Impact	Potential of In- Combination Impacts	Risk of Significant In- Combination Impacts'	Mitigation
Appendix 1 Legal, Interpretation and Policy Context Section 1.4 of the Draft CDP).							
Urban Housing Policies							
8	UB-P-29	Potentially all sites in the zone of influence of the settlement boundaries.	Potential but unlikely given that the policy relates to balance of holiday homes and permanent homes in areas already designated as settlement framework areas. Development is further restricted to brownfield sites within the urban fabric of a settlement framework.	Unlikely	Unlikely	Unlikely	Permission is conditional on compliance with environmental and heritage designations and restricted to brownfield site within the urban fabric of a settlement framework. Mitigation is provided through Natural Heritage and Water and Environmental Services, objectives and policies.
<p>Specific Action Required: Avoidance/Mitigation/Policy Deletion OR Amendment</p> <p>Natural Heritage Policies and Objectives NH-O-1 to NH-O-6, NH-O-8 to NH-O-11, NH-P-1 to NH-P-5, NH-P-9, NH-P-10 and NH-P-18 ensure compliance with Article 6 of the Habitats Directive, provide protection and promote conservation of European sites and the integrity of the Natura 2000 network.</p> <p>The following policies also ensure either explicit compliance with Article 6 of the Habitats Directive to protect European sites or protection of the wider environment: WES-O-4, WES-O-5, WES-O-6, WES-P-4 and WES-P-8.</p> <p>UB-P-5 requires compliance with Article 6 of the Habitats Directive.</p>							

Ref.	Policy/ Objective	European Sites That May Be Affected	Potential Impact of Policy /Objective	Risk of Significant Impact	Potential of In- Combination Impacts	Risk of Significant In- Combination Impacts'	Mitigation
Chapter 8 Natural Resource Development							
Energy Objectives							
9	Amendment of Map 8.2.1 (Wind Energy) in relation to lands at Derrykillew, Ballyshannon	Potentially all sites within the zone of influence of the site.	Potential impact on European sites through infrastructure development, disturbance etc.	Possible but Unlikely	Possible but Unlikely	Possible but Unlikely	The landuse zoning for Wind Energy as identified on Map 8.2.1 of the Draft CDP is robust and evidence based in relation to environmental considerations and capacity to absorb proposed development. The analysis of provision and availability of infrastructure has allowed development to be directed to appropriate areas within the County and to avoid the most vulnerable and sensitive areas. The lands identified as 'Open to Consideration' by these alterations are outside of the Natura site network in keeping with the principle of avoidance of protected areas. Favouring of infrastructure that carries a lower risk of damage to protected areas should also be emphasised in the Plan. In particular siting of
10	Amendment of Map 8.2.1 (Wind Energy) in relation to lands at Derrykillew, Ballyshannon	Potentially all sites in the zone of influence of the site.	Potential impact on European sites through infrastructure development, land take, disturbance etc.	Potential	Potential	In combination effects are possible but unlikely.	
11	Amendment of Map 8.2.1 (Wind Energy) in relation to lands at Altnapaste, Ballybofey	Potentially all sites within the vicinity of the site.	Potential impact on European sites through infrastructure development, land take, disturbance etc.	Potential	Potential	In combination effects are possible but unlikely.	
12	Amendment of Map 8.2.1 (Wind Energy) in relation to lands at Meenbog,	Potentially all sites within the vicinity of the site.	Potential impact on European sites through infrastructure development, land take, disturbance	Potential	Potential	In combination effects are possible but unlikely.	

Ref.	Policy/ Objective	European Sites That May Be Affected	Potential Impact of Policy /Objective	Risk of Significant Impact	Potential of In- Combination Impacts	Risk of Significant In- Combination Impacts'	Mitigation
	Ballybofey		etc.				infrastructure should take full account of risks identified in the relevant River Basin Management Plan and in any relevant Fresh Water Pearl Mussel Sub-basin Plan.
13	Amendment of Map 8.2.1 (Wind Energy) in relation to lands at Drumenan/ Killymasney, Newmills, Letterkenny	Potentially all sites within the vicinity of the site.	Potential impact on European sites through infrastructure development, land take, disturbance etc.	Potential	Potential	In combination effects are possible but unlikely.	<p>When a specific development is proposed it will be considered in terms of its potential impact on European sites.</p> <p>Donegal CC will ensure that implementation of individual objectives and policies gives sufficient consideration to environmental issues, and in all instances ensure compliance with Article 6 of the Habitats Directive in having regard to the relevant conservation objectives, qualifying interests and threats to the integrity of Natura 2000 sites.</p> <p>Mitigation is provided through Natural Heritage and Water and Environmental Services, objectives and policies.</p>

Ref.	Policy/ Objective	European Sites That May Be Affected	Potential Impact of Policy /Objective	Risk of Significant Impact	Potential of In- Combination Impacts	Risk of Significant In- Combination Impacts'	Mitigation
<p>Specific Action Required: Avoidance/Mitigation/Policy Deletion OR Amendment</p> <p>Natural Heritage Policies and Objectives NH-O-1 to NH-O-6, NH-O-8 to NH-O-11, NH-P-1 to NH-P-5, NH-P-9, NH-P-10 and NH-P-18 ensure compliance with Article 6 of the Habitats Directive, provide protection and promote conservation of European sites and the integrity of the Natura 2000 network.</p> <p>The following policies also ensure either explicit compliance with Article 6 of the habitats Directive to protect European sites or protection of the wider environment: WES-O-4, WES-O-5, WES-O-6, WES-P-4 and WES-P-8.</p> <p>E-P-18 seeks to mitigate against environmental impacts of renewable energy developments.</p> <p>The Plan explicitly commits to not having (or perpetuating) adverse effects on the integrity of the Natura 2000 Network or any European site and that all policies and objectives of the Plan and their implementation are subject to compliance with Article 6 of the Habitats Directive and to the full range of considerations that may apply for compliance with the Birds Directive, the EIA Directive, the SEA directive and relevant national legislation (see Part A: Appendix 1 Legal, Interpretation and Policy Context Section 1.4 of the Draft CDP).</p>							
<p>Chapter 10 The Marine Resource and Coastal Management</p>							
<p>Marine Resource and Coastal Management Objectives</p>							
14	MCRM-O-1	Potentially all coastal and marine sites.	<p>Potential. New and upgraded infrastructure associated with this objective may result in impact on European sites.</p> <p>Impact is also possible due to eutrophication, alien species introduction, disease/infections, transgenics,</p>	Potential	Potential	Potential. For example new regional developments together with new development in line with this objective could combine to cause unacceptable pressure on a protected site.	<p>Mitigation is explicit in the objective through subjecting to environmental assessments and safeguards to protect the recreational and environmental quality of the County's coastal areas.</p> <p>Mitigation is provided through Natural Heritage, Water and Environmental Services and Marine Resource and Coastal Management objectives and policies. MCRM-O-2</p>

Ref.	Policy/ Objective	European Sites That May Be Affected	Potential Impact of Policy /Objective	Risk of Significant Impact	Potential of In- Combination Impacts	Risk of Significant In- Combination Impacts'	Mitigation
			disturbance.				requires the protection of the ecological integrity, qualifying habitats and species of European sites through Appropriate Assessment of development proposals.
<p>Specific Action Required: Avoidance/Mitigation/Policy Deletion OR Amendment</p> <p>Natural Heritage Policies and Objectives NH-O-1 to NH-O-6, NH-O-8 to NH-O-11, NH-P-1 to NH-P-5, NH-P-9, NH-P-10, NH-P-18 ensure compliance with Article 6 of the Habitats Directive, provide protection and promote conservation of European sites and the integrity of the Natura 2000 network.</p> <p>The following policies also ensure either explicit compliance with Article 6 of the Habitats Directive to protect European sites or protection of the wider environment: WES-O-4, WES-O-5, WES-O-6, WES-P-4 and WES-P-8</p> <p>MCRM-O-2, MCRM-P-9 and MCRM-P-10 require the protection of the ecological integrity, qualifying habitats and species of European sites through Appropriate Assessment of development proposals.</p> <p>The Plan explicitly commits to not having (or perpetuating) adverse effects on the integrity of the Natura 2000 Network or any European site and that all policies and objectives of the Plan and their implementation are subject to compliance with Article 6 of the Habitats Directive and to the full range of considerations that may apply for compliance with the Birds Directive, the EIA Directive, the SEA directive and relevant national legislation (see Part A: Appendix 1 Legal, Interpretation and Policy Context Section 1.4 of the Draft CDP).</p>							
Marine Resource and Coastal Management Policies							
15	MCRM-P-1	Potentially all sites in the vicinity of Inver.	Potential. Infrastructure associated with this policy could impact on European sites.	Potential	Unlikely	Unlikely	Mitigation is provided through Natural Heritage, Water and Environmental Services and Marine Resource and Coastal Management objectives and policies. MCRM-O-2 requires the protection of the ecological integrity,

Ref.	Policy/ Objective	European Sites That May Be Affected	Potential Impact of Policy /Objective	Risk of Significant Impact	Potential of In- Combination Impacts	Risk of Significant In- Combination Impacts'	Mitigation
							qualifying habitats and species of European sites through Appropriate Assessment of development proposals.
<p>Specific Action Required: Avoidance/Mitigation/Policy Deletion OR Amendment</p> <p>Natural Heritage Policies and Objectives NH-O-1 to NH-O-6, NH-O-8 to NH-O-11, NH-P-1 to NH-P-5, NH-P-9, NH-P-10 and NH-P-18 ensure compliance with Article 6 of the Habitats Directive, provide protection and promote conservation of European sites and the integrity of the Natura 2000 network.</p> <p>The following policies also ensure either explicit compliance with Article 6 of the Habitats Directive to protect European sites or protection of the wider environment: WES-O-4, WES-O-5, WES-O-6, WES-P-4, WES-P-8</p> <p>MCRM-O-2, MCRM-P-9 and MCRM-P-10 require the protection of the ecological integrity, qualifying habitats and species of European sites through Appropriate Assessment of development proposals.</p> <p>The Plan explicitly commits to not having (or perpetuating) adverse effects on the integrity of the Natura 2000 Network or any European site and that all policies and objectives of the Plan and their implementation are subject to compliance with Article 6 of the Habitats Directive and to the full range of considerations that may apply for compliance with the Birds Directive, the EIA Directive, the SEA directive and relevant national legislation (see Part A: Appendix 1 Legal, Interpretation and Policy Context Section 1.4 of the Draft CDP).</p>							
PART C OBJECTIVES AND POLICIES OF THE TOWNS							
SETTLEMENT FRAMEWORKS							
17	Amendment to Map 13.1A re: lands at Clonbeg, Buncrana	Potentially all sites in the vicinity of the site at Clonbeg, Buncrana as the proposed amendment is to rezone lands from 'Strategic Residential Reserve'	Potential impact on European sites through infrastructure development, land take, disturbance etc.	Potential	Potential	In combination effects are possible but unlikely.	The zoning objectives set out in the CDP are robust and evidence based in relation to environmental considerations and capacity to absorb proposed development. The analysis of provision and availability of infrastructure has

Ref.	Policy/ Objective	European Sites That May Be Affected	Potential Impact of Policy /Objective	Risk of Significant Impact	Potential of In-Combination Impacts	Risk of Significant In-Combination Impacts'	Mitigation
		to 'Residential (Phase 1)'. Potentially all sites in the vicinity of the site at Cockhill Road, Bunrana as the proposed amendment is to rezone lands from 'Amenity/ Recreation' to 'Residential (Phase 1)'.	Potential impact on European sites through infrastructure development, land take, disturbance etc.	Potential	Potential	In combination effects are possible but unlikely.	allowed development to be directed to appropriate areas within the County and to avoid the most vulnerable and sensitive areas. The strategy of sequential outward development within the settlement layers and policies restricting many developments to urban areas also avoids pressures on receiving environments, in particular on European sites.
18	Amendment to Map 13.1A re: lands at Cockhill Road, Bunrana	Potentially all sites in the vicinity of the settlement framework boundary of Ailt an Chorráin (Burtonport).	Potential impact on European sites through infrastructure development, land take, disturbance etc.	Potential	Potential	In combination effects are possible but unlikely.	In particular the provisions of Natural Heritage objectives and policies set out in the Part B of the Development Plan provide for compliance with the requirements of Article 6 of the Habitats Directive.
19	Amendment to Map 15.7 to extend the settlement framework boundary of Ailt an Chorráin (Burtonport).	Potentially all sites in the vicinity of the settlement framework boundary of An Bun Beag-Doirí Beaga (Derrybeg).	Potential impact on European sites through infrastructure development, land take, disturbance etc.	Potential	Potential	In combination effects are possible but unlikely.	Mitigation is provided through Natural Heritage and Water and Environmental Services objectives and policies.
20	Amendment to Map 15.8 to extend the settlement framework boundary of An Bun Beag-Doirí Beaga (Derrybeg).						

Ref.	Policy/ Objective	European Sites That May Be Affected	Potential Impact of Policy /Objective	Risk of Significant Impact	Potential of In- Combination Impacts	Risk of Significant In- Combination Impacts'	Mitigation
21	Amendment to Map 15.10 to extend the settlement framework boundary of An Fál Carrach (Falcarragh).	Potentially all sites in the vicinity of the settlement framework boundary of An Fál Carrach (Falcarragh).	Potential impact on European sites through infrastructure development, land take, disturbance etc.	Potential	Potential	In combination effects are possible but unlikely.	
22	Amendment to Map 15.11 to extend the settlement framework boundary of Ardara.	Potentially all sites in the vicinity of the settlement framework boundary of Ardara.	Potential impact on European sites through infrastructure development, land take, disturbance etc.	Potential	Potential	In combination effects are possible but unlikely.	
23	Amendment to Map 15.14 to extend the settlement framework boundary of Dunfanaghy.	Potentially all sites in the vicinity of the settlement framework boundary of Dunfanaghy.	Potential impact on European sites through infrastructure development, land take, disturbance etc.	Potential	Potential	In combination effects are possible but unlikely.	
24	Amendment to Map 15.15 to extend the settlement framework boundary of Glenties.	Potentially all sites in the vicinity of the settlement framework boundary of Glenties.	Potential impact on European sites through infrastructure development, land take, disturbance etc.	Potential	Potential	In combination effects are possible but unlikely.	
26	Amendment to	Potentially all sites	Potential impact on	Potential	Potential	In combination	

Ref.	Policy/ Objective	European Sites That May Be Affected	Potential Impact of Policy /Objective	Risk of Significant Impact	Potential of In- Combination Impacts	Risk of Significant In- Combination Impacts'	Mitigation
	Map 15.17 to extend the settlement framework boundary of Lifford.	in the vicinity of the settlement framework boundary of Lifford.	European sites through infrastructure development, land take, disturbance etc.			effects are possible but unlikely.	
28	Amendment to Map 15.22 to extend the settlement framework boundary of Anagaire (Annagry) and also to include an area of amenity along the coastline.	Potentially all sites in the vicinity of the settlement framework boundary of Anagaire (Annagry).	Potential impact on European sites through infrastructure development, land take, disturbance etc.	Potential	Potential	In combination effects are possible but unlikely.	
29	Amendment to Map 15.27 to extend the settlement framework boundary of Carrigans.	Potentially all sites in the vicinity of the settlement framework boundary of Carrigans.	Potential impact on European sites through infrastructure development, land take, disturbance etc.	Potential	Potential	In combination effects are possible but unlikely.	
30	Amendment to Map 15.29 to extend the settlement framework boundary of Castlefin.	Potentially all sites in the vicinity of the settlement framework boundary of Castlefin.	Potential impact on European sites through infrastructure development, land take, disturbance	Potential	Potential	In combination effects are possible but unlikely.	

Ref.	Policy/ Objective	European Sites That May Be Affected	Potential Impact of Policy /Objective	Risk of Significant Impact	Potential of In- Combination Impacts	Risk of Significant In- Combination Impacts'	Mitigation
	Castlefin.		etc.				
32	Amendment to Map 15.33 to extend the settlement framework boundary of Creeslough.	Potentially all sites in the vicinity of the settlement framework boundary of Creeslough.	Potential impact on European sites through infrastructure development, land take, disturbance etc.	Potential	Potential	In combination effects are possible but unlikely.	
33	Amendment to Map 15.42 to extend the settlement framework boundary of Gort an Choirce (Gortahork).	Potentially all sites in the vicinity of the settlement framework boundary of Gort an Choirce (Gortahork).	Potential impact on European sites through infrastructure development, land take, disturbance etc.	Potential	Potential	In combination effects are possible but unlikely.	
34	Amendment to Map 15.43 to extend the settlement framework boundary of Killea.	Potentially all sites in the vicinity of the settlement framework boundary of Killea.	Potential impact on European sites through infrastructure development, land take, disturbance etc.	Potential	Potential	In combination effects are possible but unlikely.	
35	Amendment to Map 15.44 to extend the settlement framework boundary of	Potentially all sites in the vicinity of the settlement framework boundary of Killygordan.	Potential impact on European sites through infrastructure development, land take, disturbance	Potential	Potential	In combination effects are possible but unlikely.	

Ref.	Policy/ Objective	European Sites That May Be Affected	Potential Impact of Policy /Objective	Risk of Significant Impact	Potential of In- Combination Impacts	Risk of Significant In- Combination Impacts'	Mitigation
	Killygordan.		etc.				
36	Amendment to Map 15.47 to extend the settlement framework boundary of Loch an Iúir (Loughanure).	Potentially all sites in the vicinity of the settlement framework boundary of Loch an Iúir (Loughanure).	Potential impact on European sites through infrastructure development, land take, disturbance etc.	Potential	Potential	In combination effects are possible but unlikely.	
37	Amendment to Map 15.48 to extend the settlement framework boundary of Manorcunningham.	Potentially all sites in the vicinity of the settlement framework boundary of Manorcunningham.	Potential impact on European sites through infrastructure development, land take, disturbance etc.	Potential	Potential	In combination effects are possible but unlikely.	
38	Amendment to Map 15.51 to extend the settlement framework boundary of Muff.	Potentially all sites in the vicinity of the settlement framework boundary of Muff.	Potential impact on European sites through infrastructure development, land take, disturbance etc.	Potential	Potential	In combination effects are possible but unlikely.	
39	Amendment to Map 15.59 to extend the settlement framework boundary of St Johnston.	Potentially all sites in the vicinity of the settlement framework boundary of St Johnston.	Potential impact on European sites through infrastructure development, land take, disturbance	Potential	Potential	In combination effects are possible but unlikely.	

Ref.	Policy/ Objective	European Sites That May Be Affected	Potential Impact of Policy /Objective	Risk of Significant Impact	Potential of In- Combination Impacts	Risk of Significant In- Combination Impacts'	Mitigation
	Johnston.		etc.				
40	Insertion of new map at Culineen, Redcastle	Potentially all sites in the vicinity of Culineen, Redcastle as the lands are to be rezoned from 'Open Countryside' to 'Multiple Residential development'	Potential impact on European sites through infrastructure development, land take, disturbance etc.	Potential	Potential	In combination effects are possible but unlikely.	
<p>Specific Action Required: Avoidance/Mitigation/Policy Deletion OR Amendment</p> <p>Objectives and policies of Part C Towns are subject to all other policies and objectives of the Draft CDP. Natural Heritage Policies and Objectives NH-O-1 to NH-O-6, NH-O-8 to NH-O-11, NH-P-1 to NH-P-5, NH-P-9, NH-P-10 and NH-P-18 ensure compliance with Article 6 of the Habitats Directive, provide protection and promote conservation of European sites and the integrity of the Natura 2000 network.</p> <p>The following policies also ensure either explicit compliance with Article 6 of the Habitats Directive to protect European sites or protection of the wider environment: WES-O-4, WES-O-5, WES-O-6, WES-P-4 and WES-P-8.</p> <p>The Plan explicitly commits to not having (or perpetuating) adverse effects on the integrity of the Natura 2000 Network or any European site and that all policies and objectives of the Plan and their implementation are subject to compliance with Article 6 of the Habitats Directive and to the full range of considerations that may apply for compliance with the Birds Directive, the EIA Directive, the SEA directive and relevant national legislation (see Part A: Appendix 1 Legal, Interpretation and Policy Context Section 1.4 of the Draft CDP).</p>							