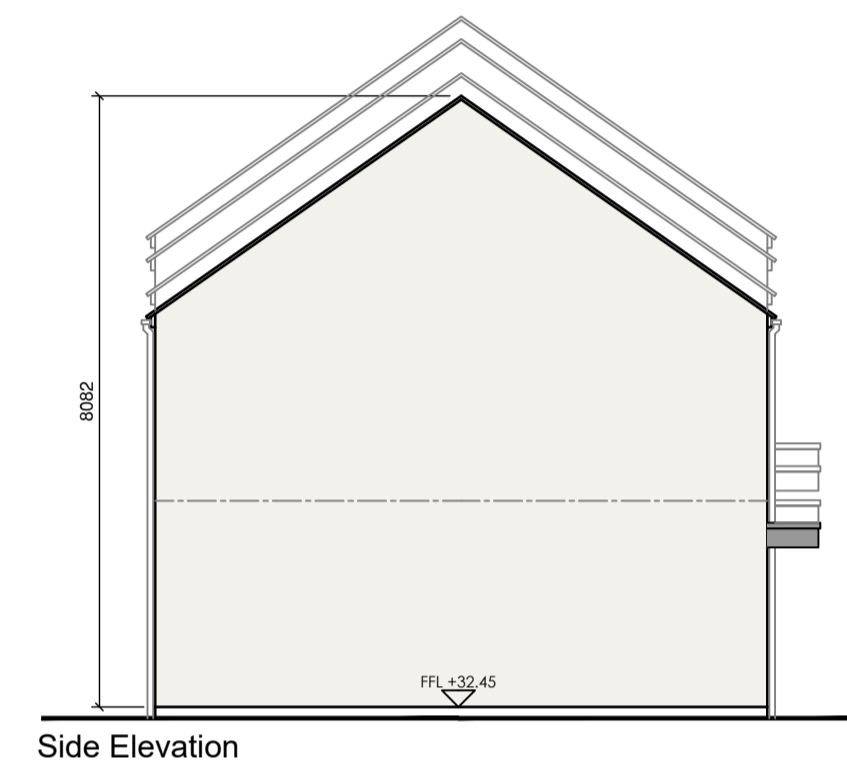
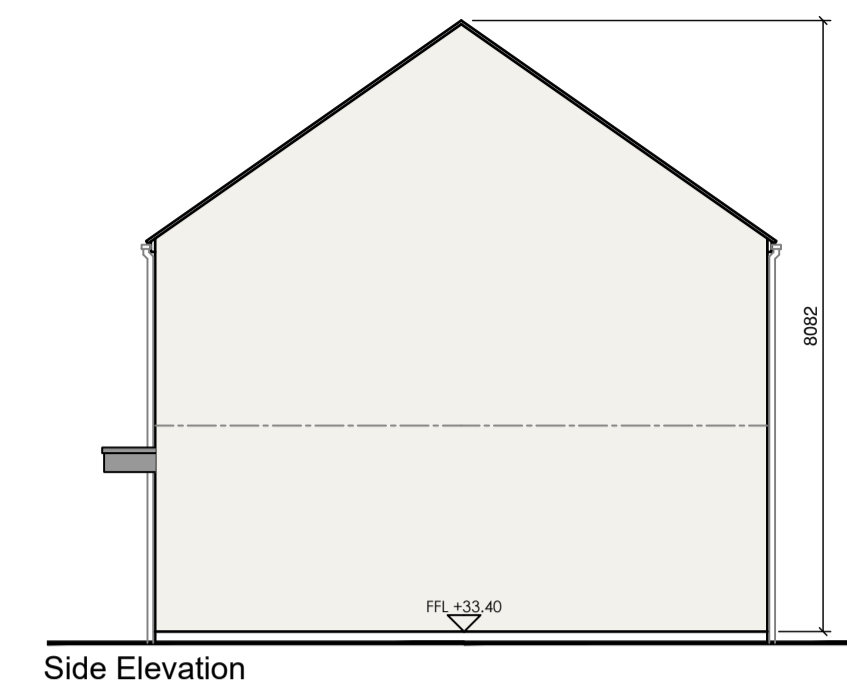


House Type 3

Quality Housing for Sustainable Communities Standards

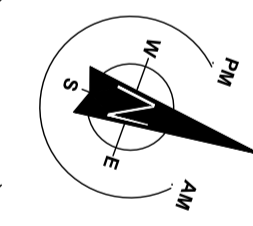
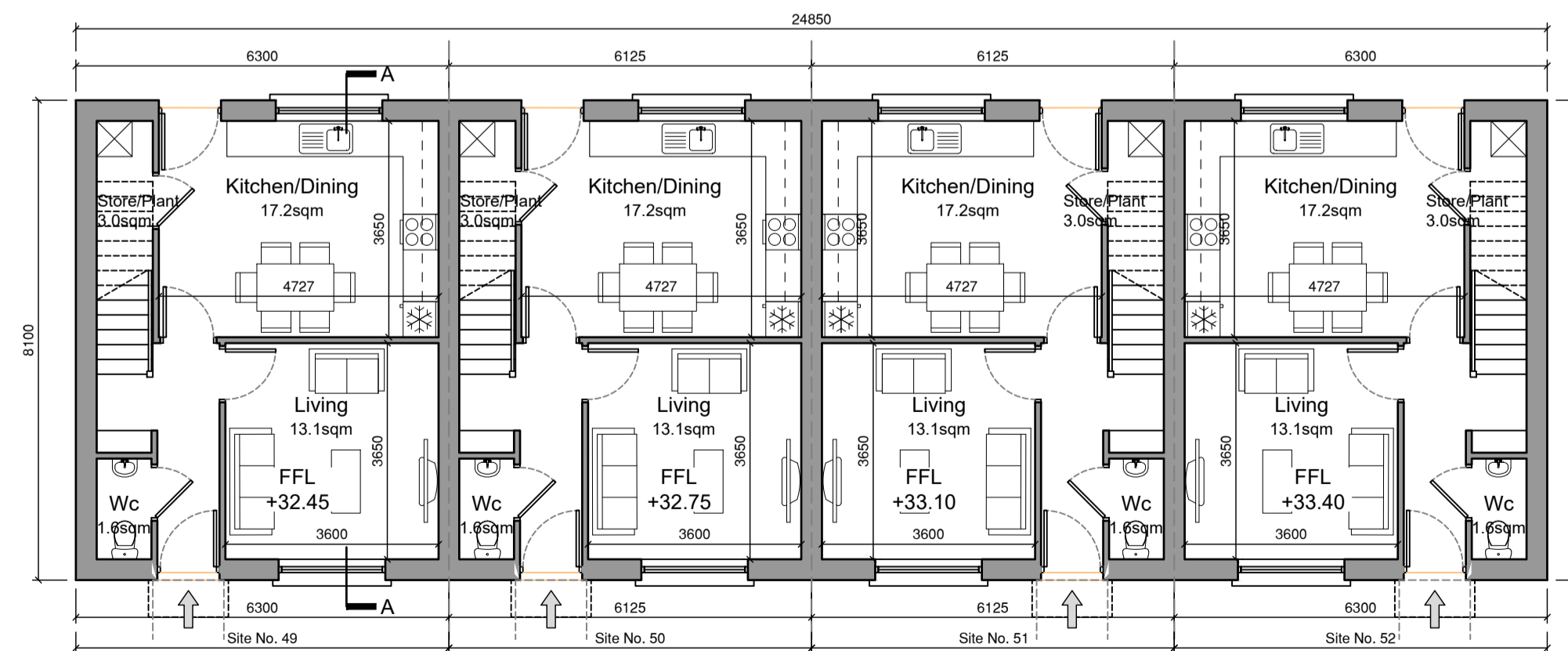
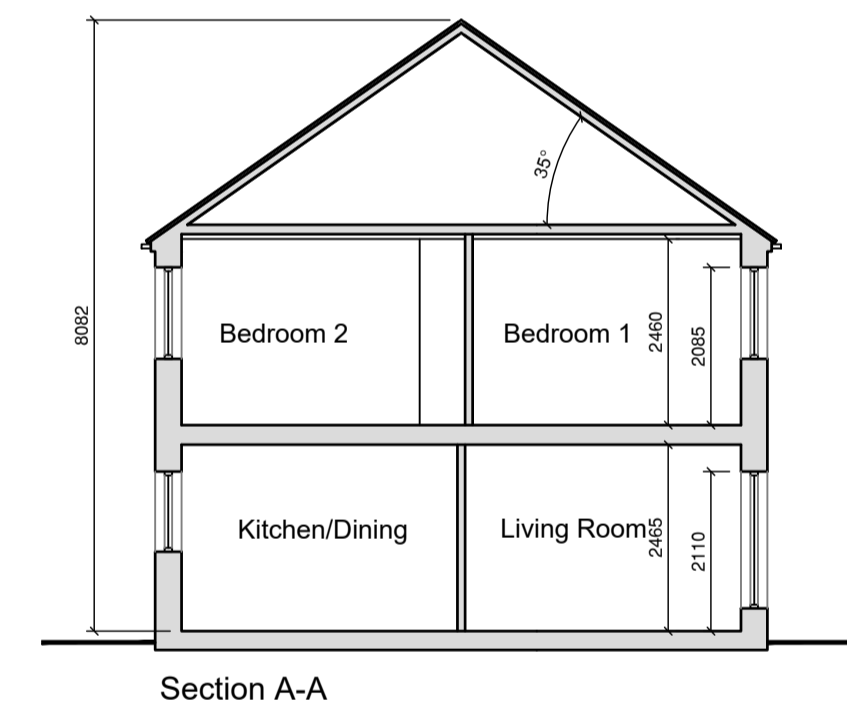
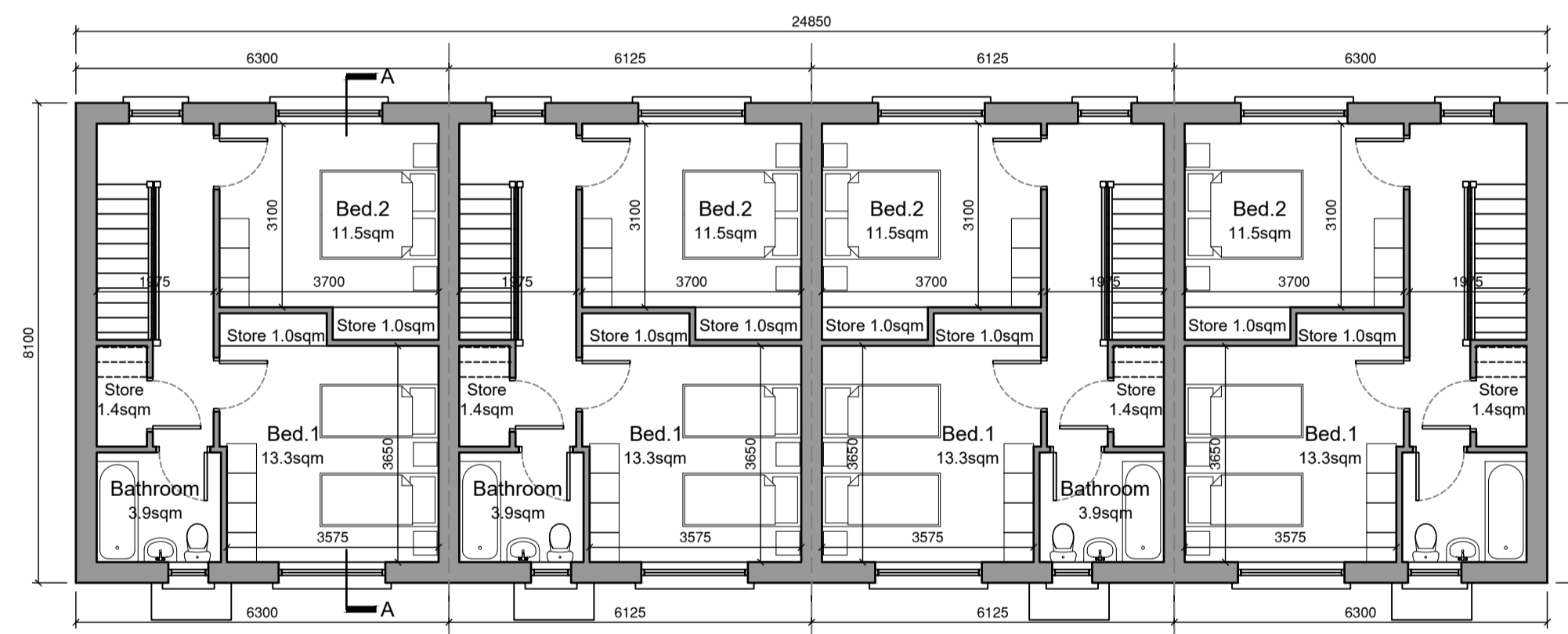
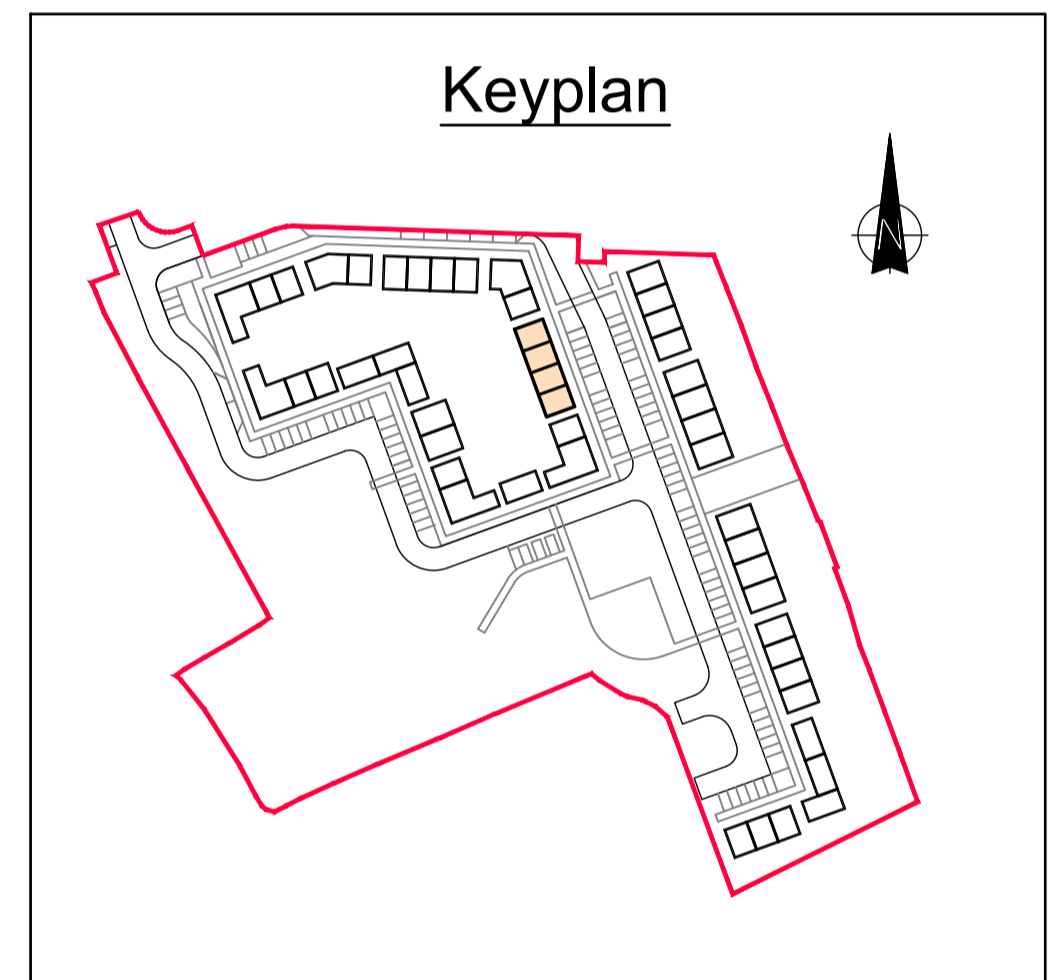
2 Bedroom / 4 Person House (2 Storey) Areas:					
	Target Gross Floor Areas (m ²)	Min-Main Living Room (m ²)	Aggregate Living Area (m ²)	Aggregate Bedroom Area (m ²)	Storage (m ²)
Required	80 sqm	13 sqm	30sqm	25 sqm	4 sqm
Provided	85sqm	13.1 sqm	30.3sqm	24.8 sqm	6.4 sqm

3 Bedroom / 5 Person (2 Storey) Widths:					
	Single Bedroom (m)	Double Bedroom (m)	Living Rm [1 Bed] (m)	Living Rm [2 Bed] (m)	Living Rm [3 Bed] (m)
Required	2.1m	2.8m	3.3m	3.6m	3.8m
Provided	-	3.1 m	-	3.6 m	-



External Finishes Schedule

Roof:	Blue/Black Fibre cement Slate
Walls:	White External Render - Smooth/dashed
Windows & Doors:	Grey AluClad
Rain Water Goods:	Black uPVC
Canopy:	Grey Aluminium Fascia.



NOTES

REVISION	DATE	DESCRIPTION	BY
-	-	-	-
-	-	-	-
-	-	-	-
-	-	-	-
-	-	-	-
-	-	-	-
-	-	-	-