

House Type 26

Quality Housing for Sustainable Communities Standards

1 Bedroom / 2 Person (apt) Areas:				
	Target Gross Floor Areas (m ²)	Aggregate Living Area (m ²)	Aggregate Bedroom Area (m ²)	Storage (m ²)
Required	45 sqm	23sqm	11.4 sqm	3 sqm
Provided	GF 50.1sqm FF 50.1sqm*	GF 22.9sqm FF 22.9sqm	GF 11.5sqm FF 11.5sqm	GF 4.1sqm FF 6.4sqm

2 Bedroom / 3 Person (apt) Widths:					
	Single Bedroom (m)	Double Bedroom (m)	Living Rm [1 Bed] (m)	Living Rm [2 Bed] (m)	Living Rm [3 Bed] (m)
Required	2.1m	2.8m	3.3m	3.6m	3.8m
Provided	-	GF 3.1sqm FF 3.1sqm	GF 3.325sqm FF 3.325sqm	-	-

*Excluding Stairs

House Type 3

Quality Housing for Sustainable Communities Standards

2 Bedroom / 4 Person House (2 Storey) Areas:					
	Target Gross Floor Areas (m ²)	Min-Main Living Room (m ²)	Aggregate Living Area (m ²)	Aggregate Bedroom Area (m ²)	Storage (m ²)
Required	80 sqm	13 sqm	30sqm	25 sqm	4 sqm
Provided	85sqm	13.1 sqm	30.3sqm	24.8 sqm	6.4 sqm

3 Bedroom / 5 Person (2 Storey) Widths:					
	Single Bedroom (m)	Double Bedroom (m)	Living Rm [1 Bed] (m)	Living Rm [2 Bed] (m)	Living Rm [3 Bed] (m)
Required	2.1m	2.8m	3.3m	3.6m	3.8m
Provided	-	3.1 m	-	3.6 m	-



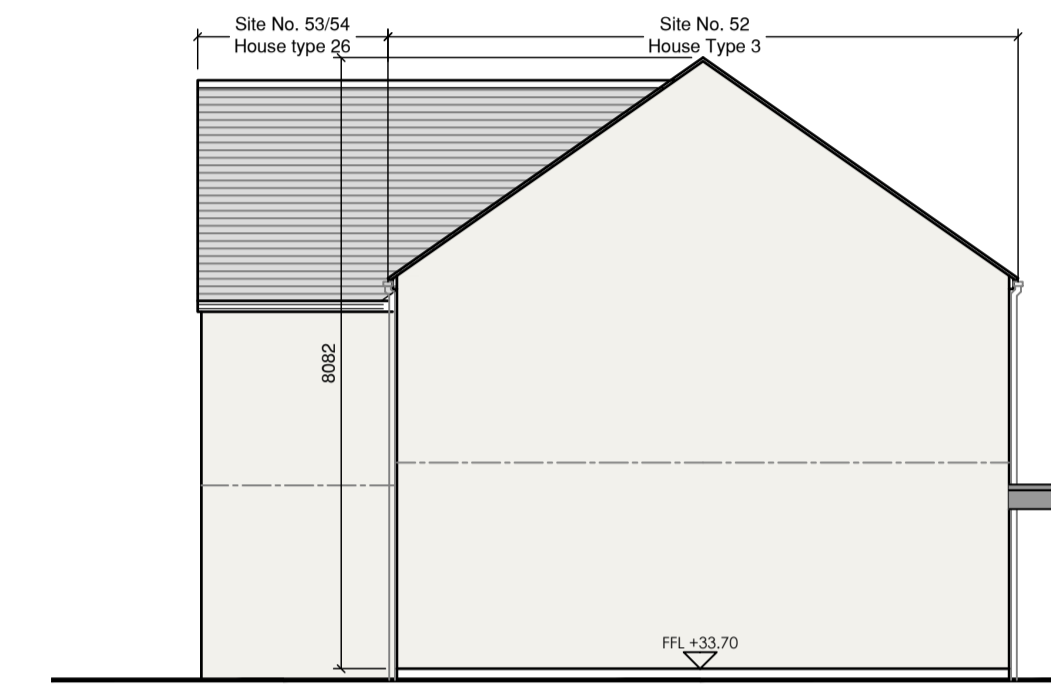
Front Elevation 1



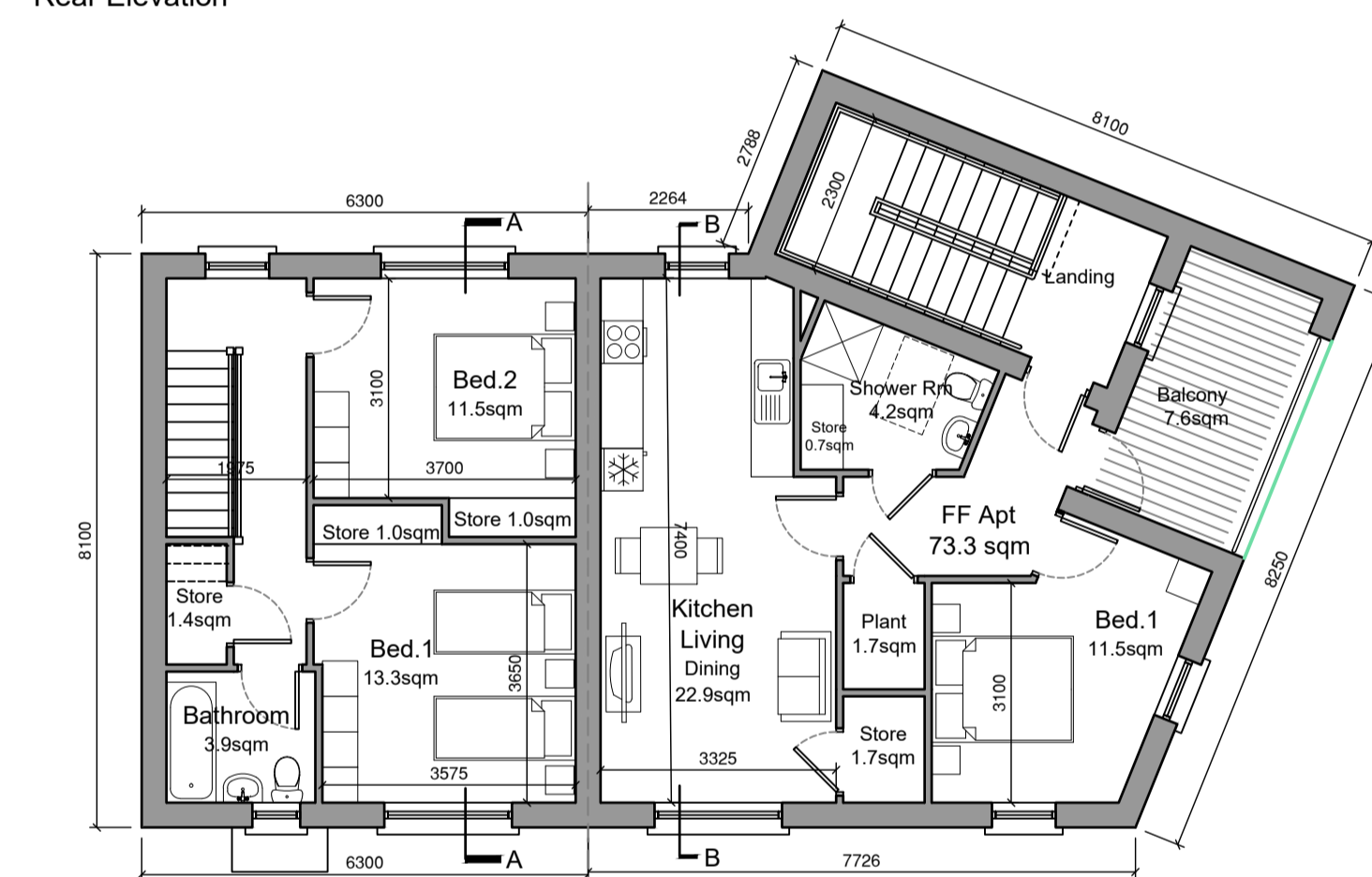
Front Elevation 2



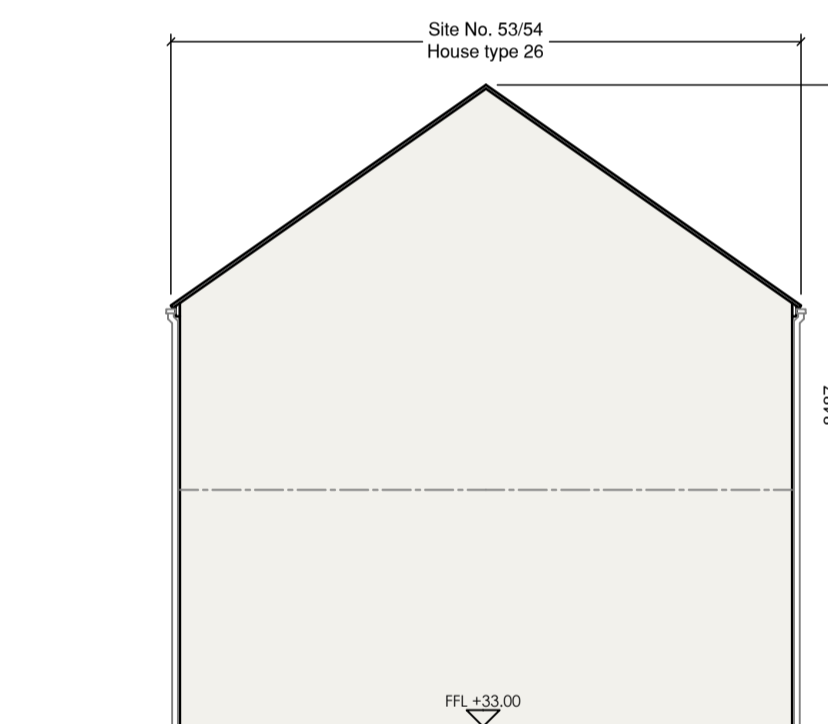
Rear Elevation



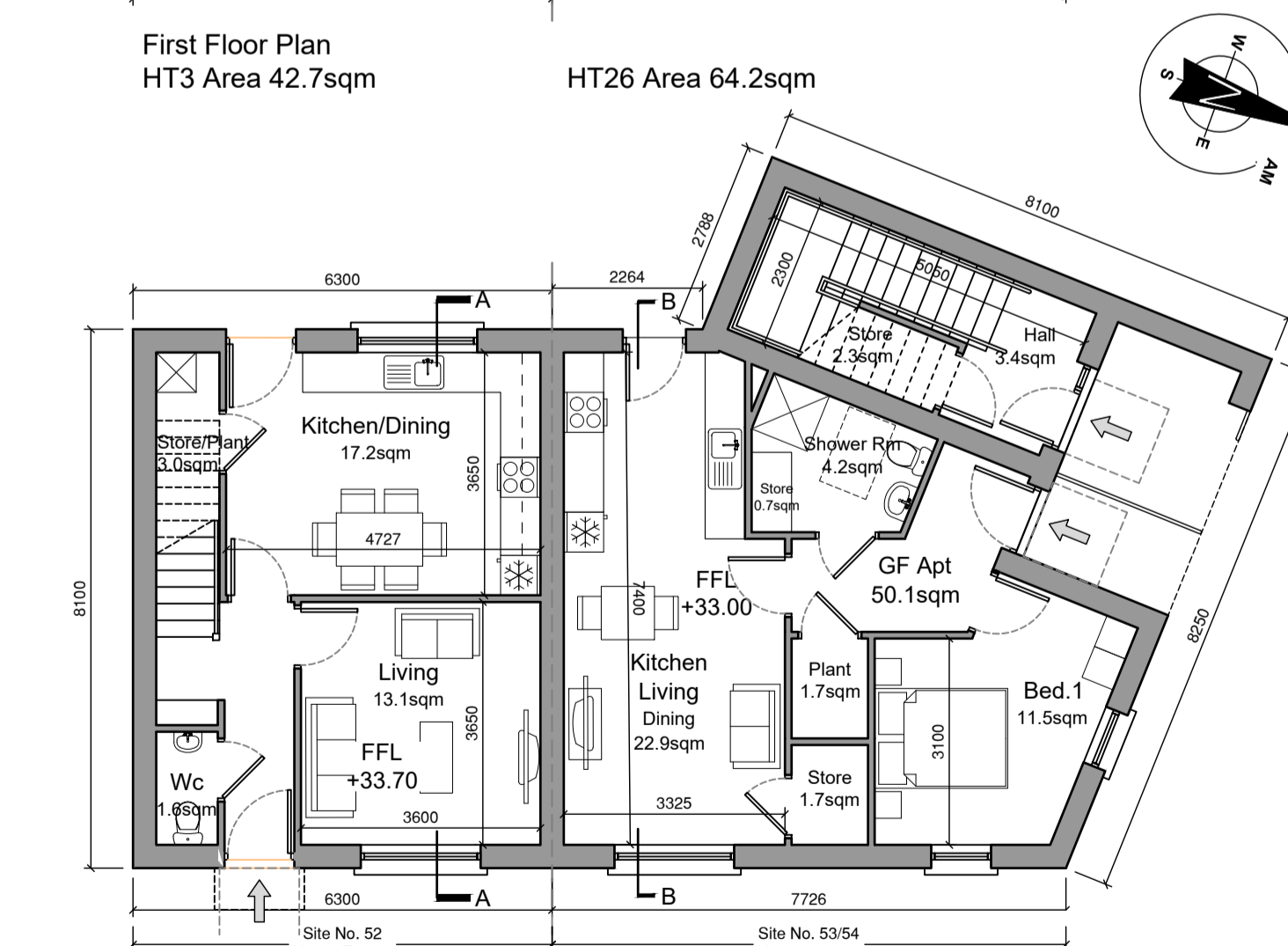
Side Elevation



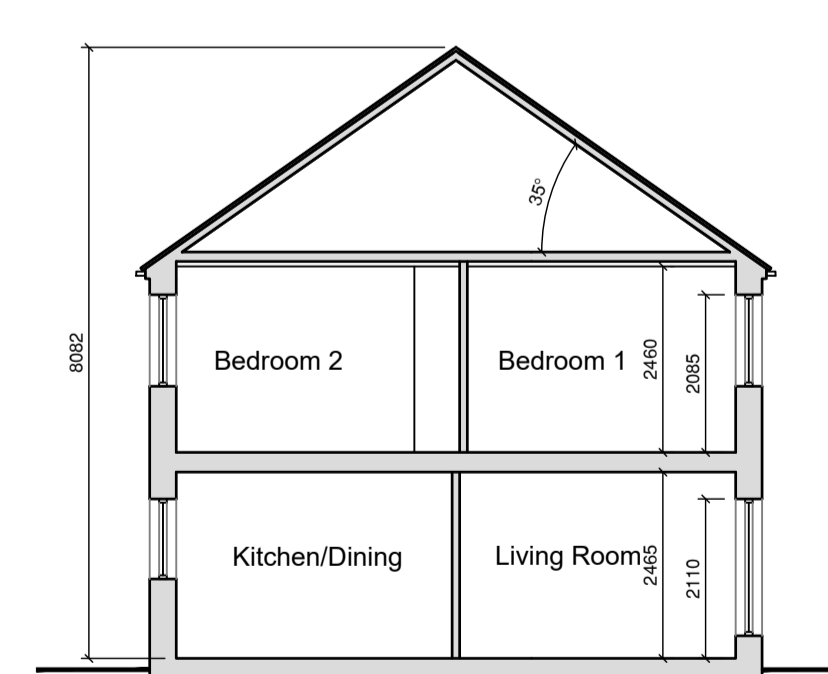
First Floor Plan
HT3 Area 42.7sqm HT26 Area 64.2sqm



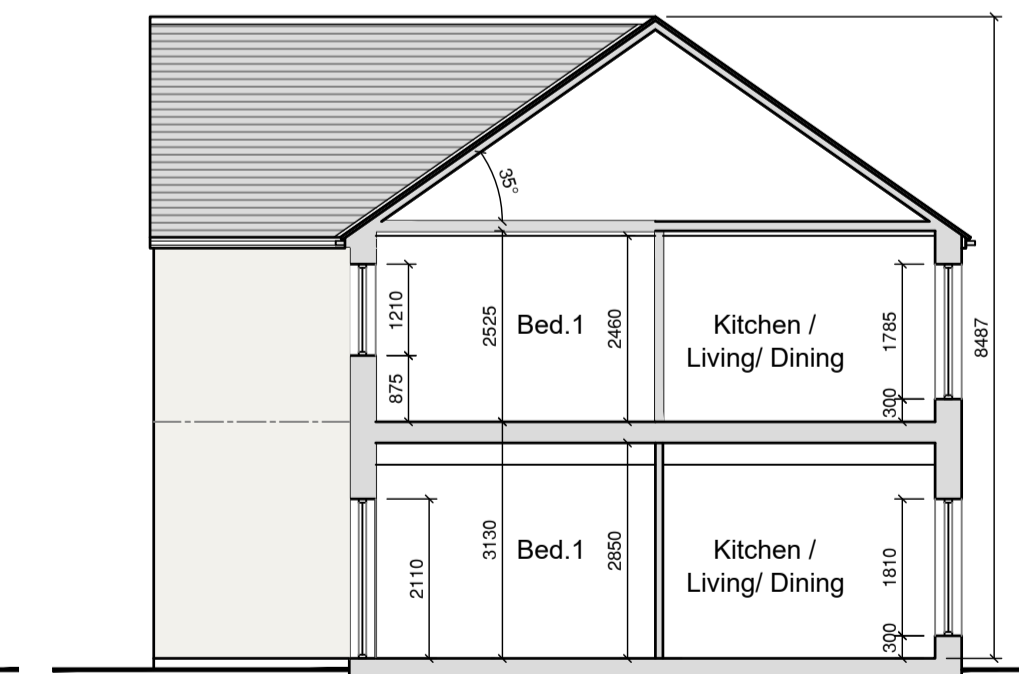
Side Elevation



Ground Floor Plan
HT3 Area:42.7sqm Total Floor Area 85sqm HT 26 Area:64.2sqm Total Floor Area 128.4sqm



Section A-A

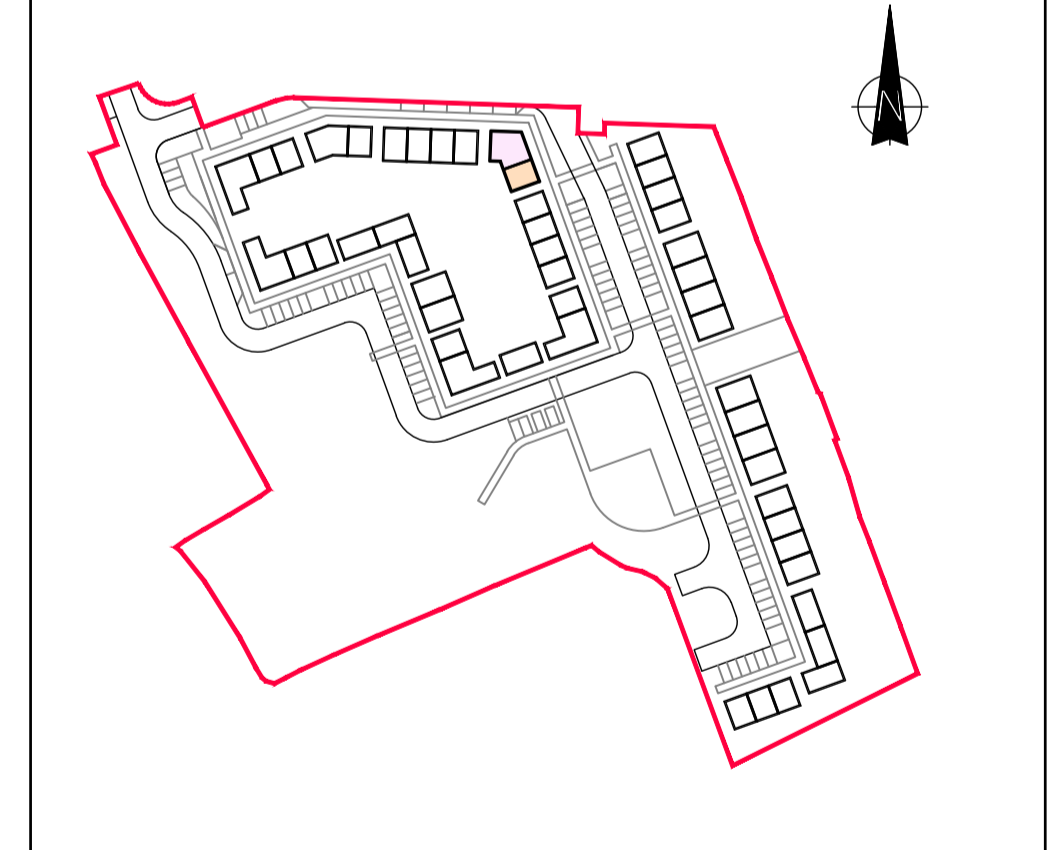


Section B-B

External Finishes Schedule

- Roof: Blue/Black Fibre cement Slate
- Walls: White External Render - Smooth/dashed
- Windows & Doors: Grey AluClad
- Rain Water Goods: Black uPVC
- Canopy: Grey Aluminium Fascia.

Keyplan



NOTES

REVISION	DATE	DESCRIPTION	BY
-	-	-	-
-	-	-	-
-	-	-	-
-	-	-	-
-	-	-	-
-	-	-	-