

House Type 6

Quality Housing for Sustainable Communities Standards

3 Bedroom / 5 Person House (2 Storey) Areas:

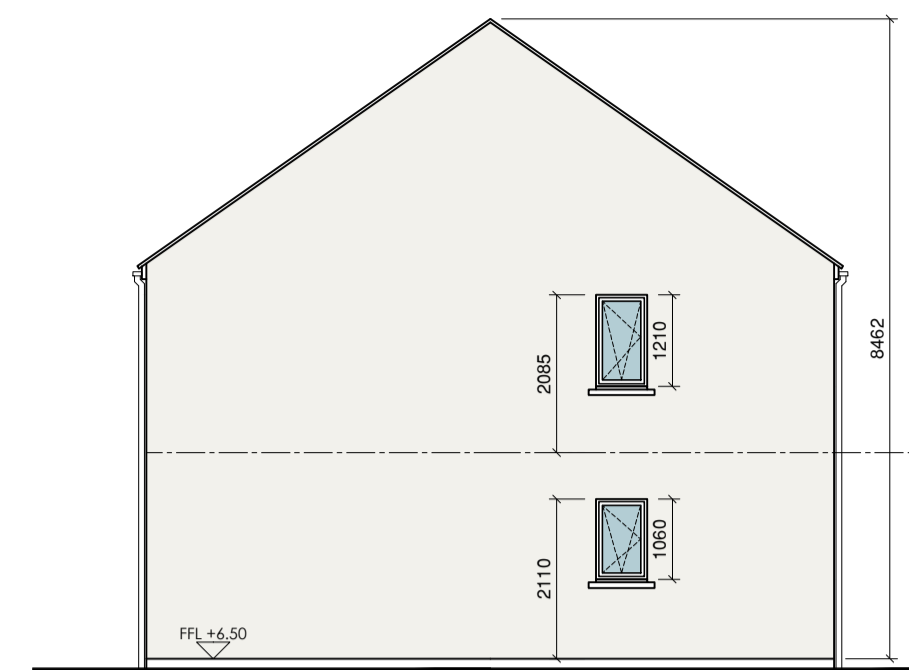
	Target Gross Floor Areas (m ²)	Min-Main Living Room (m ²)	Aggregate Living Area (m ²)	Aggregate Bedroom Area (m ²)	Storage (m ²)
Required	92 sqm	13 sqm	34 sqm	32 sqm	5 sqm
Provided	96.7sqm	14.3 sqm	35sqm	32.6 sqm	5 sqm

3 Bedroom / 5 Person (2 Storey) Widths:

	Single Bedroom (m)	Double Bedroom (m)	Living Rm [1 Bed] (m)	Living Rm [2 Bed] (m)	Living Rm [3 Bed] (m)
Required	2.1m	2.8m	3.3m	3.6m	3.8m
Provided	2.85 m	2.9 m	-	-	3.8 m



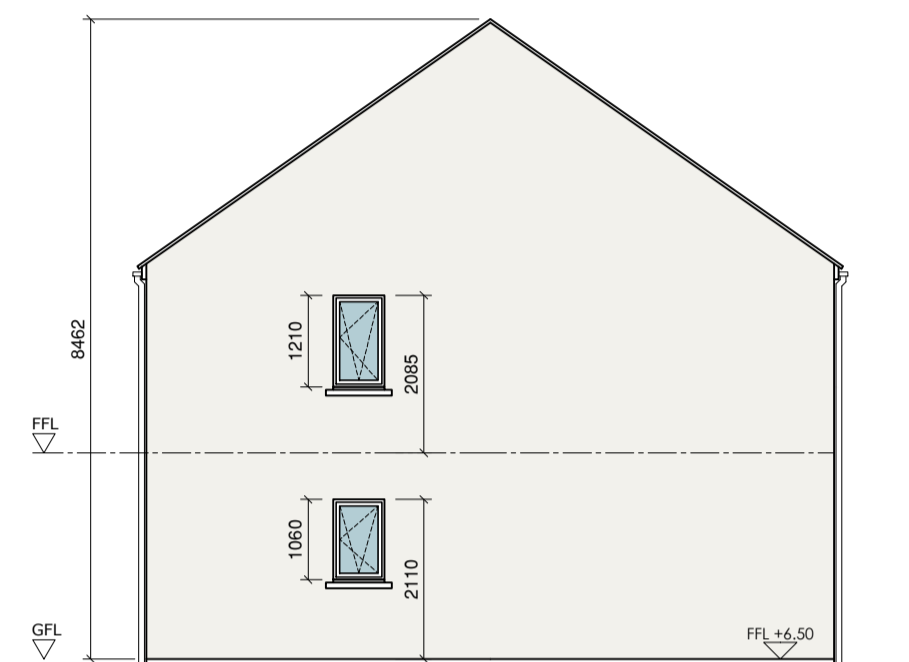
Front Elevation



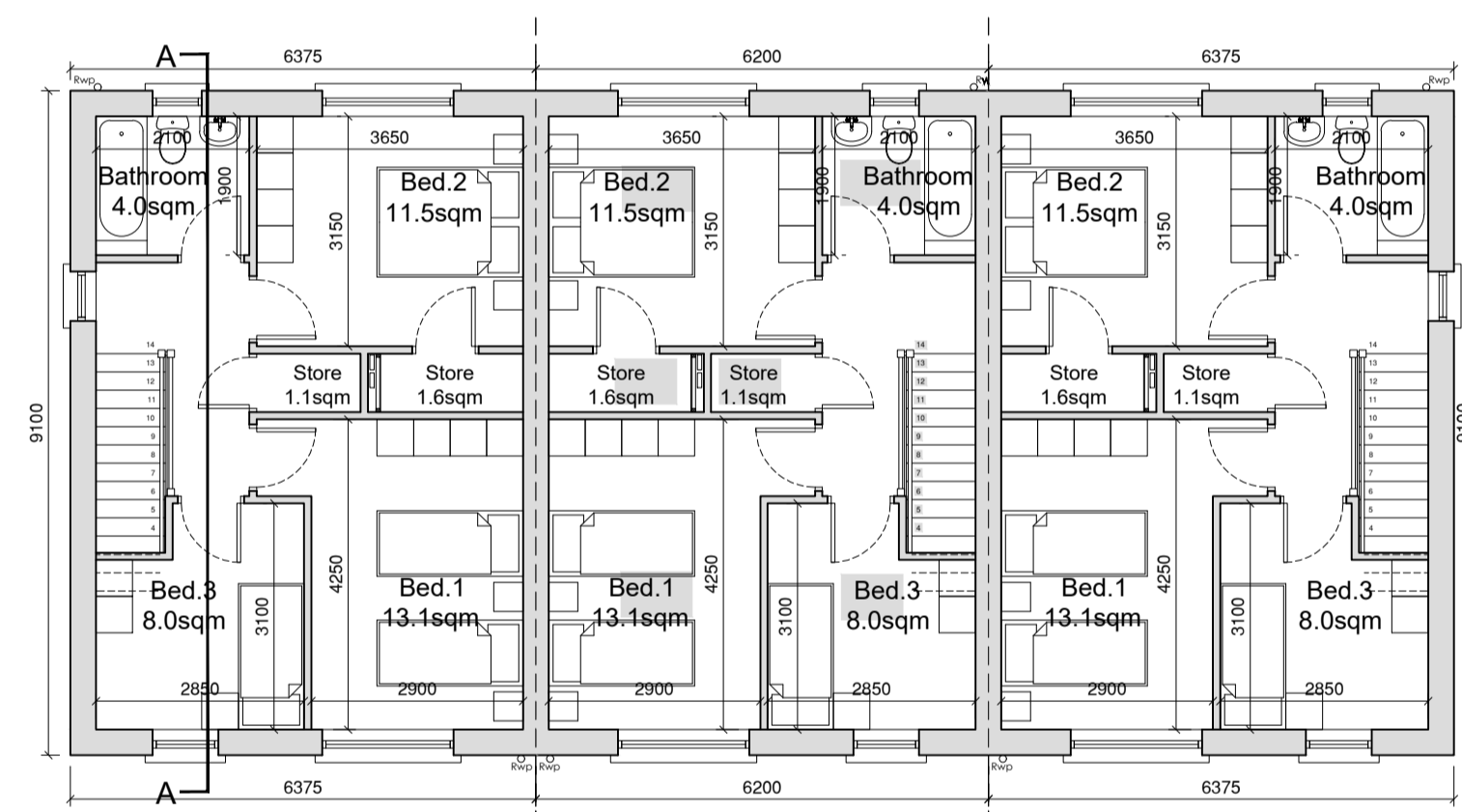
Side Elevation



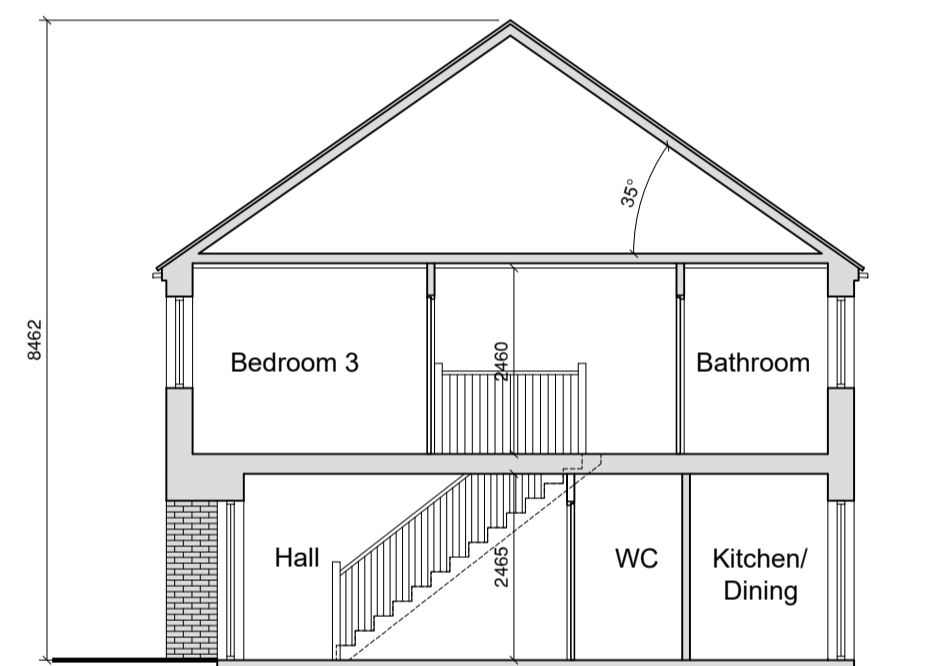
Rear Elevation



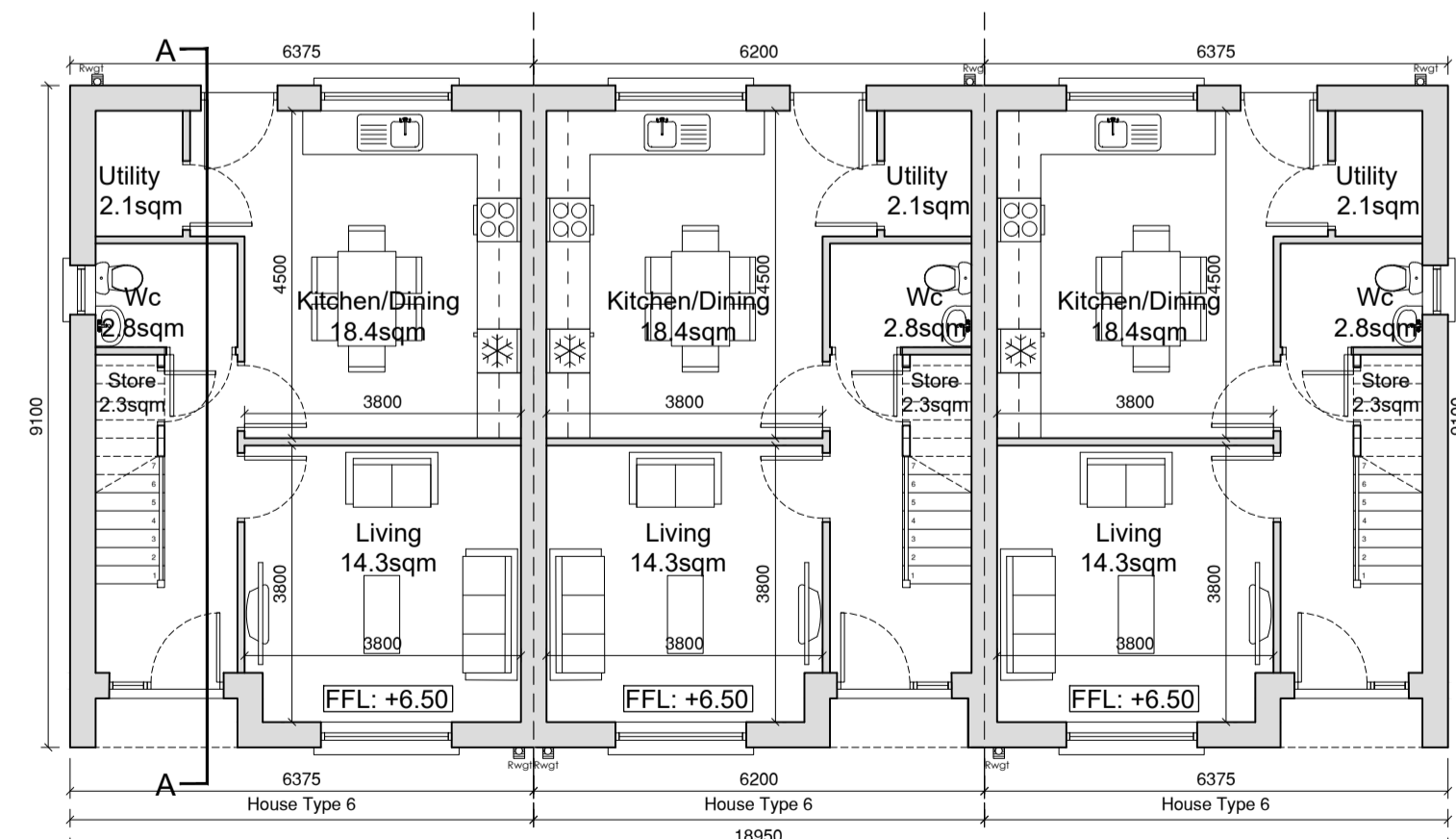
Side Elevation



First Floor Plan

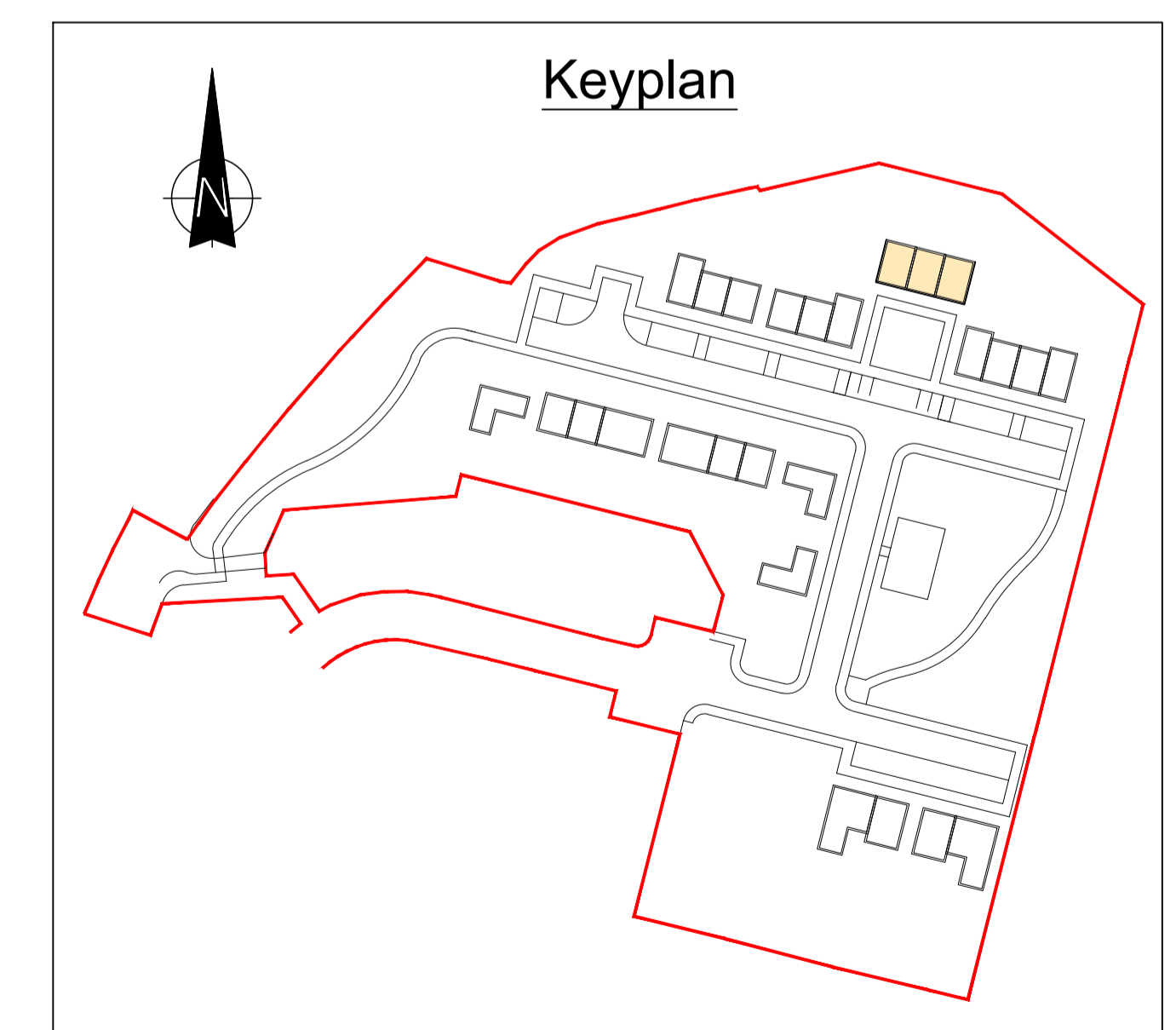


Section A-A



Ground Floor Plan

External Finishes Schedule	
Roof:	Blue/Black Fibre cement Slate Dry Verge Finish.
Walls:	White External Render - Smooth/dashed Brick detail at Entrances
Windows & Doors:	Grey AluClad/uPVC
Rain Water Goods:	Black uPVC



REVISION	DATE	DESCRIPTION	BY
-	-	-	-
-	-	-	-
-	-	-	-
-	-	-	-
-	-	-	-
-	-	-	-