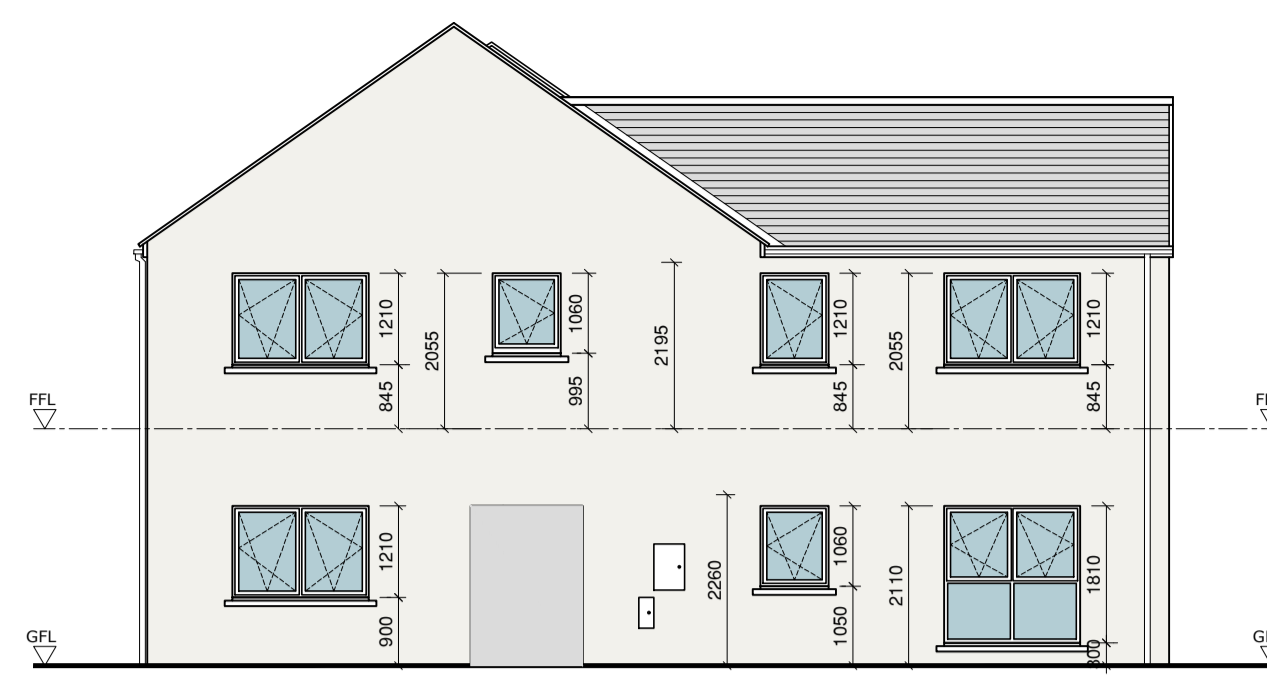




Front Elevation



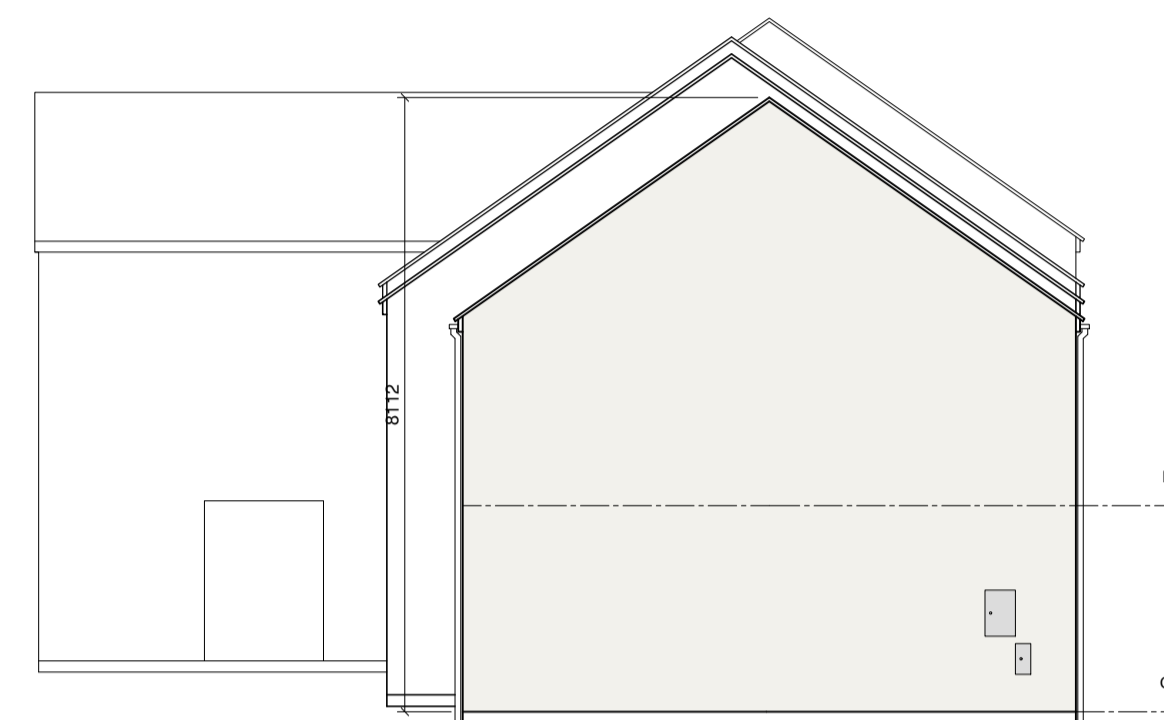
Side Elevation

External Finishes Schedule

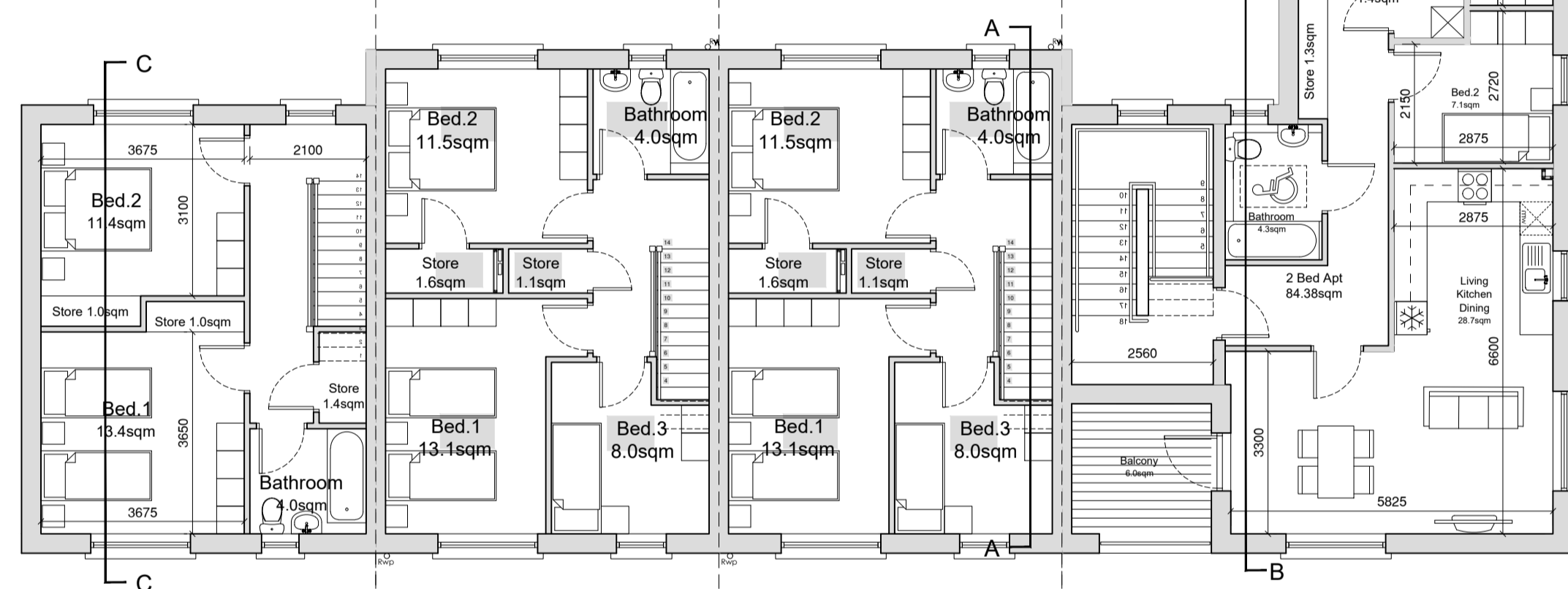
Roof: Blue/Black Fibre cement Slate
 Walls: White External Render - Smooth/dashed
 Brick detail at Entrances
 Windows & Doors: Grey AluClad
 Rain Water Goods: Black uPVC



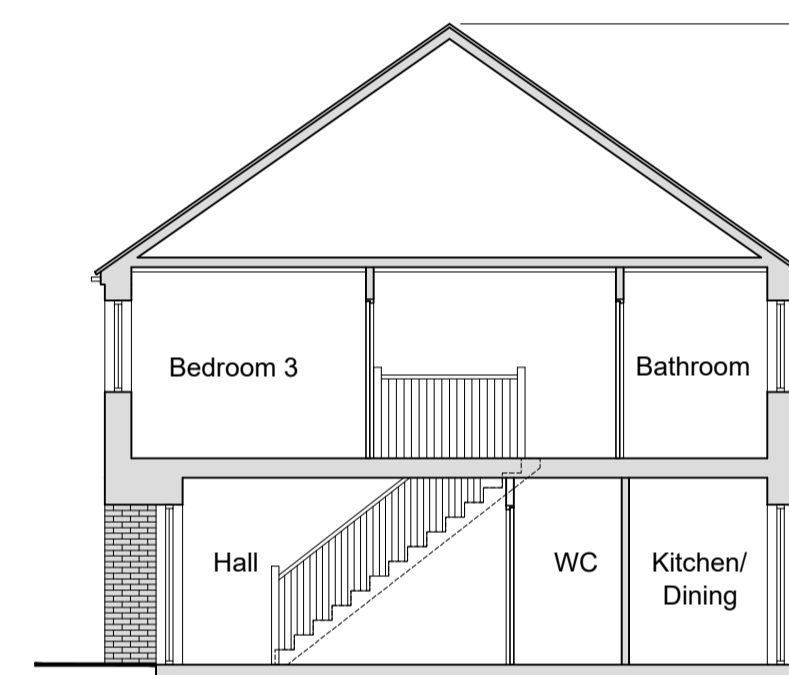
Rear Elevation



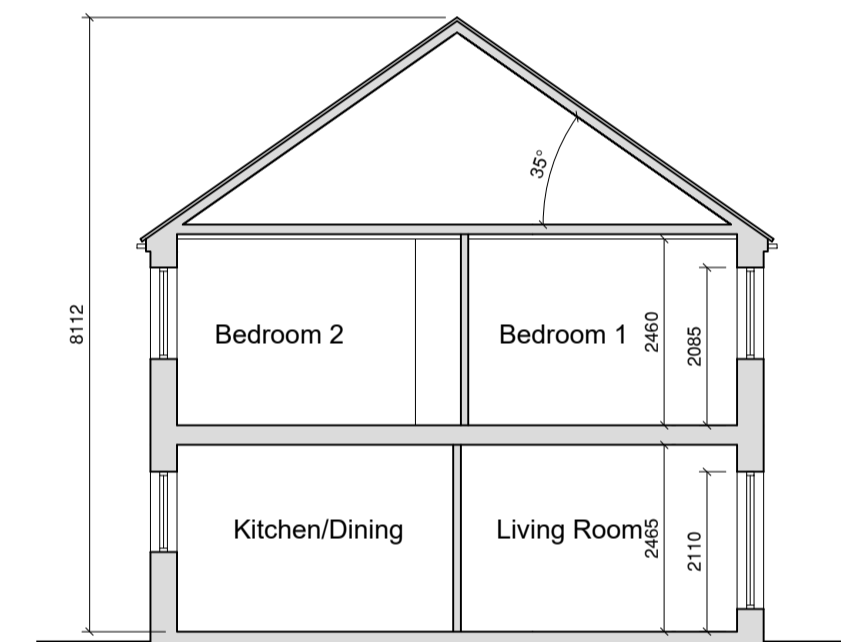
Side Elevation



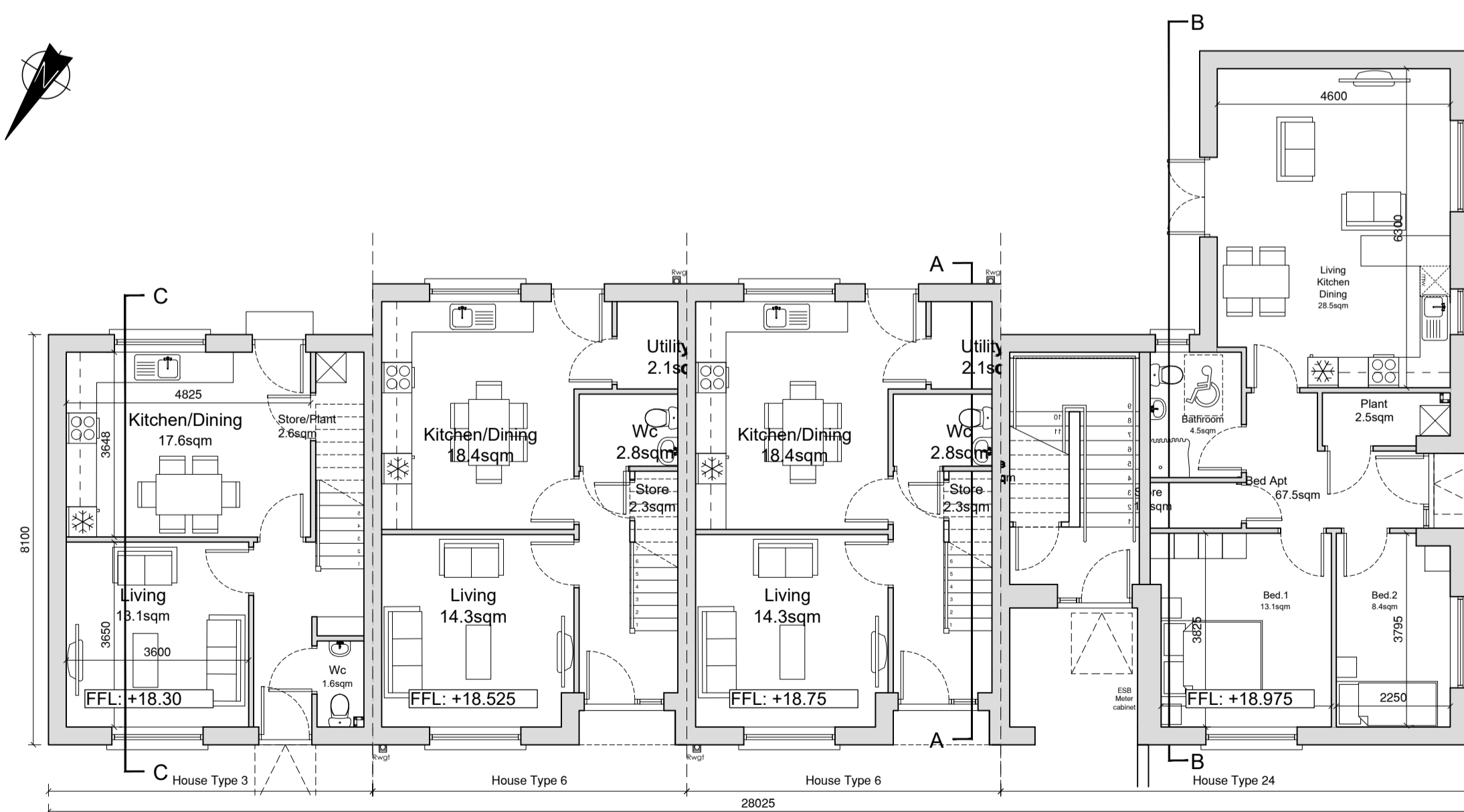
First Floor Plan



Section A-A



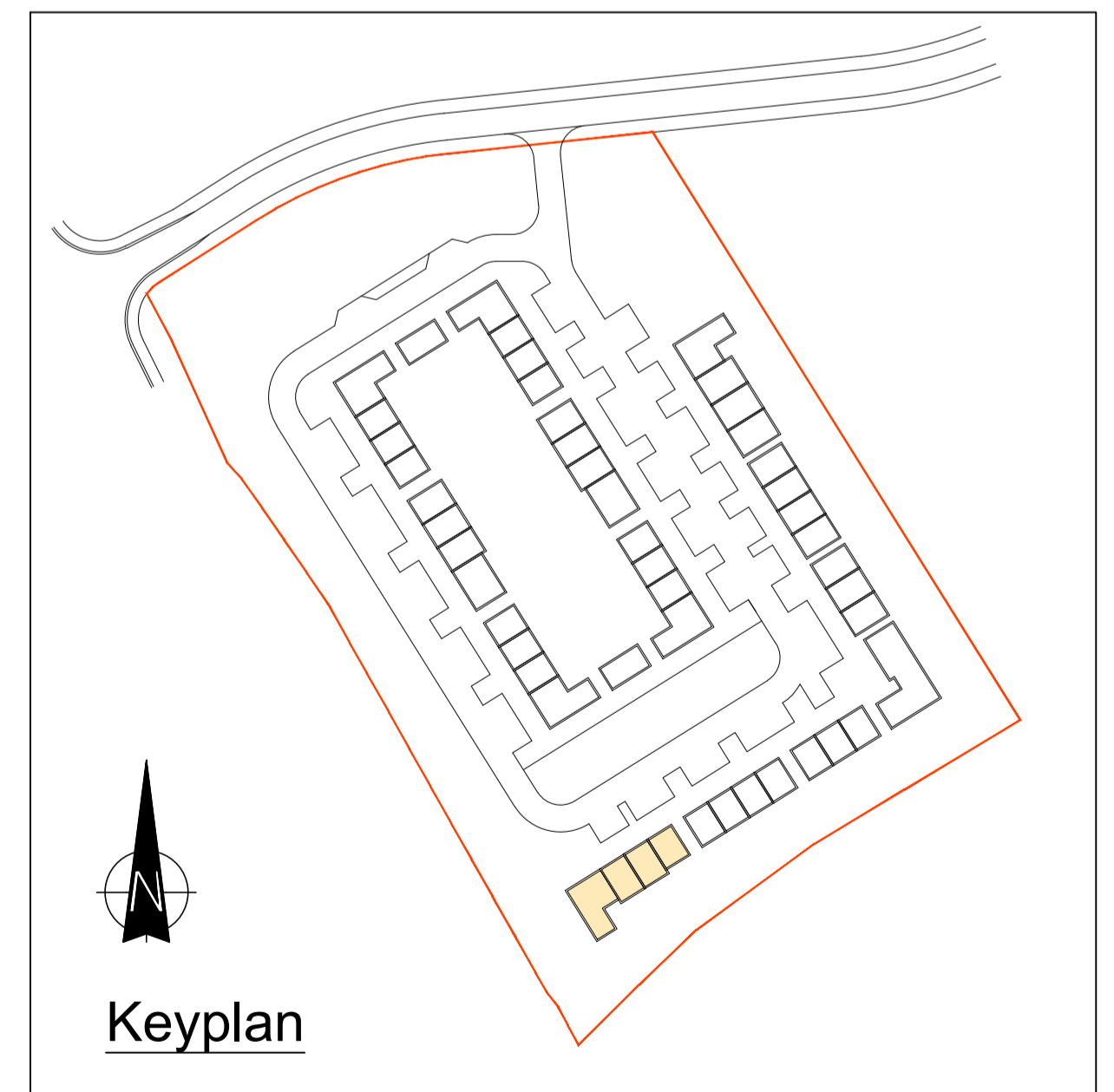
Section C-C



Ground Floor Plan



Section B-B



Keyplan

House Type 6

Quality Housing for Sustainable Communities Standards

3 Bedroom / 5 Person House (2 Storey) Areas:					
Target Gross Floor Areas (m ²)	Min-Main Living Room (m ²)	Aggregate Living Area (m ²)	Aggregate Bedroom Area (m ²)	Storage (m ²)	
Required: 92 sqm	13 sqm	34 sqm	32 sqm	5 sqm	
Provided: 96.7sqm	14.3 sqm	35sqm	32.6 sqm	5 sqm	

3 Bedroom / 5 Person (2 Storey) Widths:					
Single Bedroom (m)	Double Bedroom (m)	Living Rm [1 Bed] (m)	Living Rm [2 Bed] (m)	Living Rm [3 Bed] (m)	
Required: 2.1m	2.8m	3.3m	3.6m	3.8m	
Provided: 2.85 m	2.9 m	-	-	3.8 m	

House Type 24

Quality Housing for Sustainable Communities Standards

2 Bedroom / 3 Person (apt) Areas:				
Target Gross Floor Areas (m ²)	Aggregate Living Area (m ²)	Aggregate Bedroom Area (m ²)	Storage (m ²)	
Required: 63 sqm	28sqm	20.1 sqm	5 sqm	
Provided: GF 67.5sqm FF 69.33sqm*	GF 28.5sqm FF 28.7sqm	GF 21.5sqm FF 21.1sqm	GF 3.4sqm** FF 5.1sqm	

2 Bedroom / 3 Person (apt) Widths:					
Single Bedroom (m)	Double Bedroom (m)	Living Rm [1 Bed] (m)	Living Rm [2 Bed] (m)	Living Rm [3 Bed] (m)	
Required: 2.1m	2.8m	3.3m	3.6m	3.8m	
Provided: GF 2.14m FF 2.2m	GF 3.36m FF 2.9m	-	GF 4.37sqm FF 3.3sqm	-	

*Excluding Stairs
 **Additional Storage in External Shed

House Type 3

Quality Housing for Sustainable Communities Standards

2 Bedroom / 4 Person House (2 Storey) Areas:					
Target Gross Floor Areas (m ²)	Min-Main Living Room (m ²)	Aggregate Living Area (m ²)	Aggregate Bedroom Area (m ²)	Storage (m ²)	
Required: 80 sqm	13 sqm	30sqm	25 sqm	4 sqm	
Provided: 87sqm	13.1 sqm	30.7sqm	24.8 sqm	6.0 sqm	

3 Bedroom / 5 Person (2 Storey) Widths:					
Single Bedroom (m)	Double Bedroom (m)	Living Rm [1 Bed] (m)	Living Rm [2 Bed] (m)	Living Rm [3 Bed] (m)	
Required: 2.1m	2.8m	3.3m	3.6m	3.8m	
Provided: -	3.1 m	-	3.6 m	-	

NOTES

REVISION	DATE	DESCRIPTION	BY
-	-	-	-