

Side Elevation (South East) Scale 1:100

- LEGEND:
- ① White Aluminium Soffit
 - ② RHEINZINK shiplap panel cladding
 - ③ Frameless Glass External Lift
 - ④ Aluminium Curtain Wall Glazing
 - ⑤ Frameless Glass Guarding
 - ⑥ Locally sourced Natural Stone
 - ⑦ Grey Aluminium Box Window
 - ⑧ Triple Glazed Aluminium Window

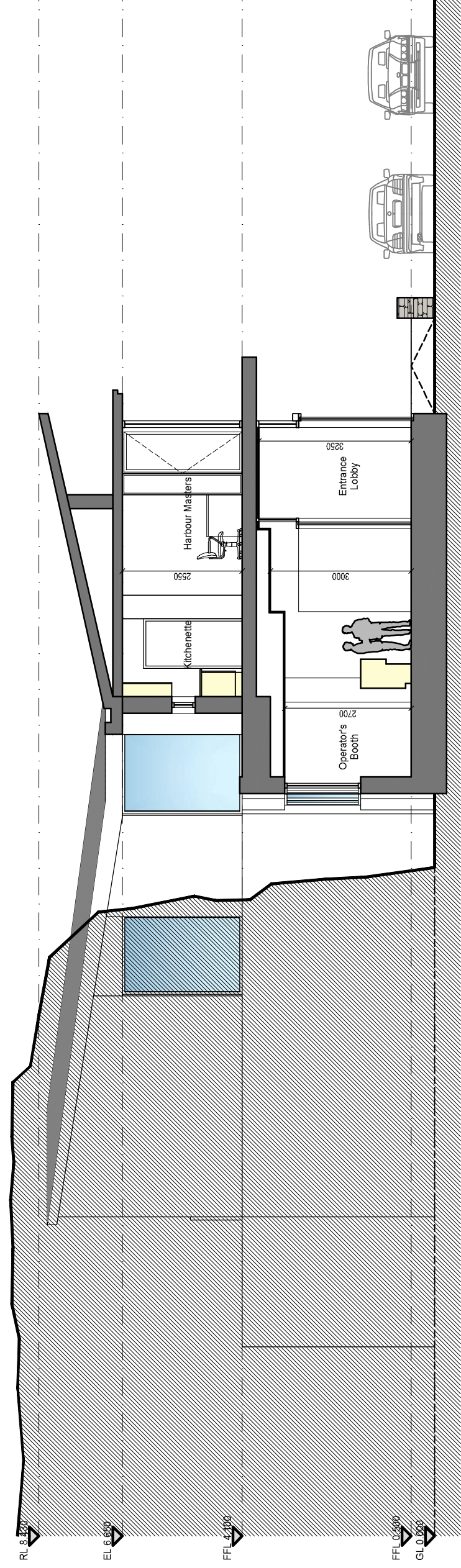
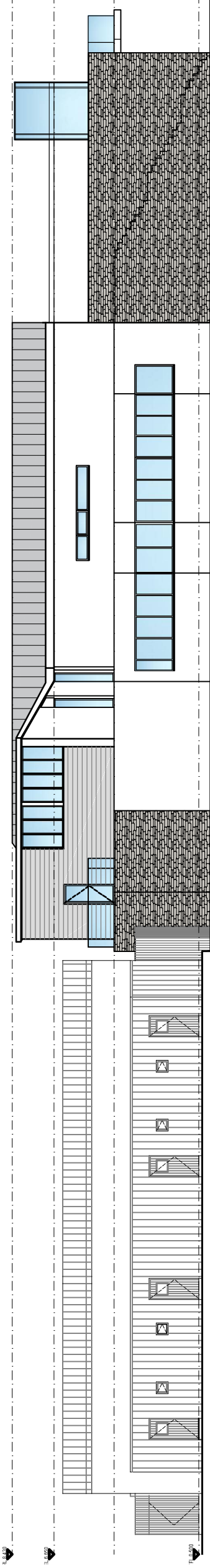


**Comhairle Contae
Dhún na nGall**
Donegal County Council

Community Development & Planning Services

Three Rivers Centre, Lifford, Co. Donegal
Tel: (074) 9133901 | Fax: (074) 9127812 | www.donregalcc.ie
L. Ward, Director of Community Development & Planning Services

Rear Elevation in context with Enterprise Retail Units Scale 1:200



Section A-A Scale 1:100

PLANNING ISSUE

| | | | |
|----------|-------------------|----|----|
| 20/01/20 | Planning Issue | CM | CS |
| 13/07/20 | Preliminary Issue | CM | CS |

| Rev | Date | Description | Rev by | Chk by |
|-----|------|-------------|--------|--------|
|-----|------|-------------|--------|--------|

Project
Burtonport Harbour Redevelopment
- Phase 2, Burtonport, Co. Donegal
for Donegal County Council

Drawing Title
Harbour Building
Elevations & Section

Drawing No.
6719 / PL-06

Scale
As shown @ A3

Date
January 2020

architects
mh associates
surveyors

T. +353 (0)74 9125968
F. +353 (0)74 9126451
E. info@mhassociates.ie
W. mhassociates.ie

Convent Road
Letterkenny
Co. Donegal