





TEMPLATE 4


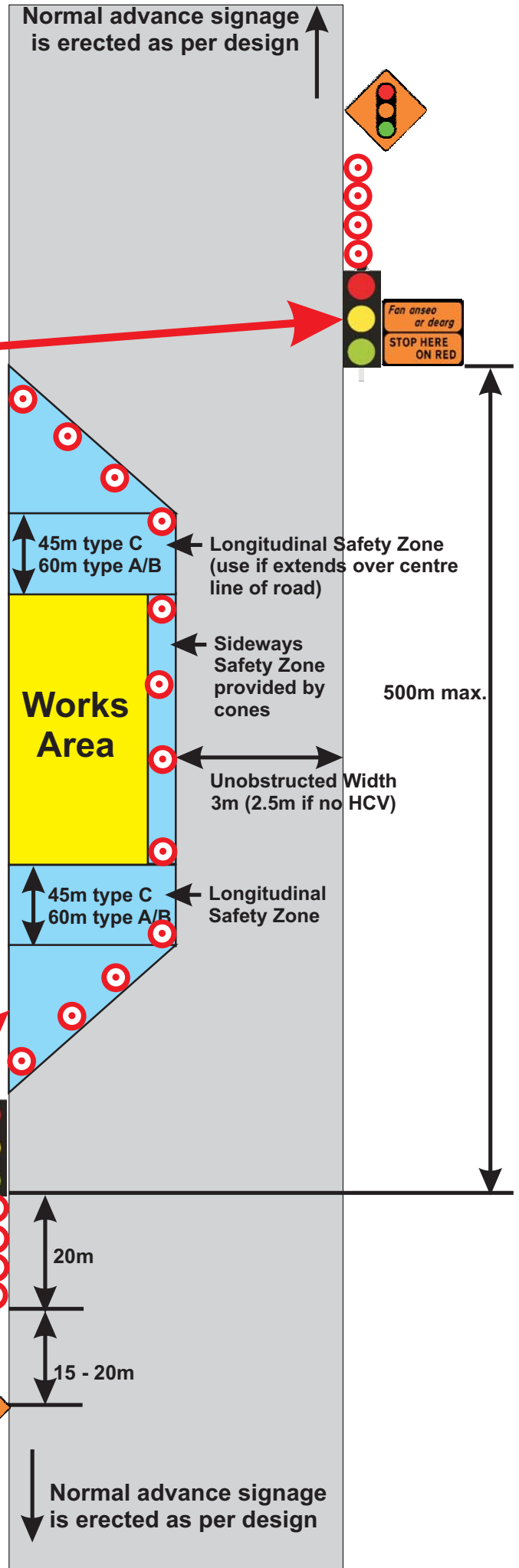
Shuttle Traffic Control at sites with very limited sideways safety zones

Temporary Traffic Signals must be vehicle actuated

You may substitute traffic lights with Stop & Go/ All Stop/ Marshall operation but note the following:

Substitute advance sign  with 

Also, visibility requirement for flagmen is as follows:
 80 km/h = 75m
 100 km/h = 90m

Traffic Light visibility
80km/h = 120m
100km/h = 160m