

RZLT Map 2025 – Errata

An Clochán Liath (Dungloe)



Land Parcel ID DLLA0000863 outlined in red above, located at **Meenmore, An Clochán Liath**, was incorrectly included on the local authority final map for 2025, following a determination to exclude said land parcel.

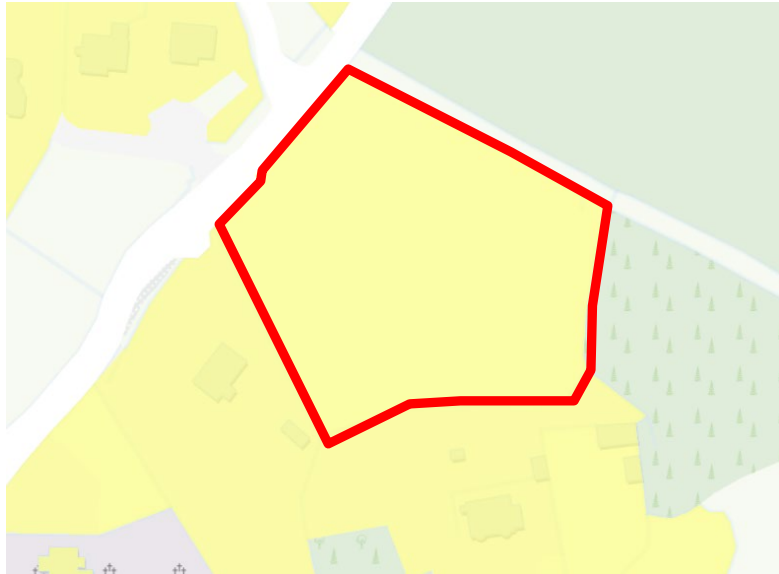
Ballybofey-Stranorlar



Land Parcel DLLA0000897 outlined in red above, located at **Navenny, Ballybofey**, was incorrectly included on the local authority final map for 2025. The subject lands do not meet the criteria for inclusion on the RZLT map.



Land Parcel DLLA0000225J outlined in red above, located at **Navenny, Ballybofey**, was incorrectly included on the local authority final map for 2025. The subject lands do not meet the criteria for inclusion on the RZLT map.

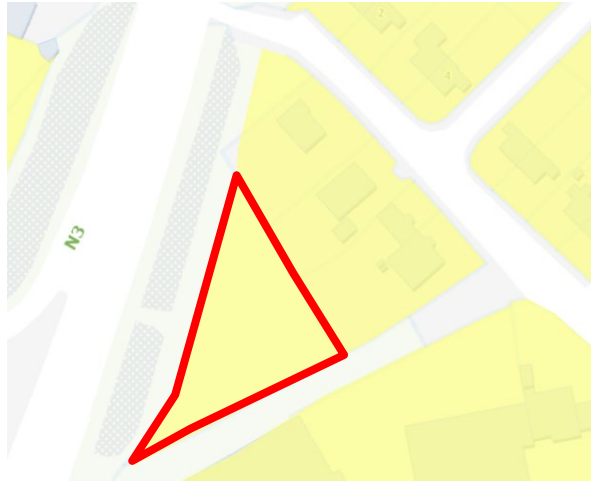


Land Parcel ID DLLA0000243J, as outlined in red above, located at **Glebe, Stranorlar** was incorrectly included on the local authority final map for 2025, following a determination to exclude the land parcel.

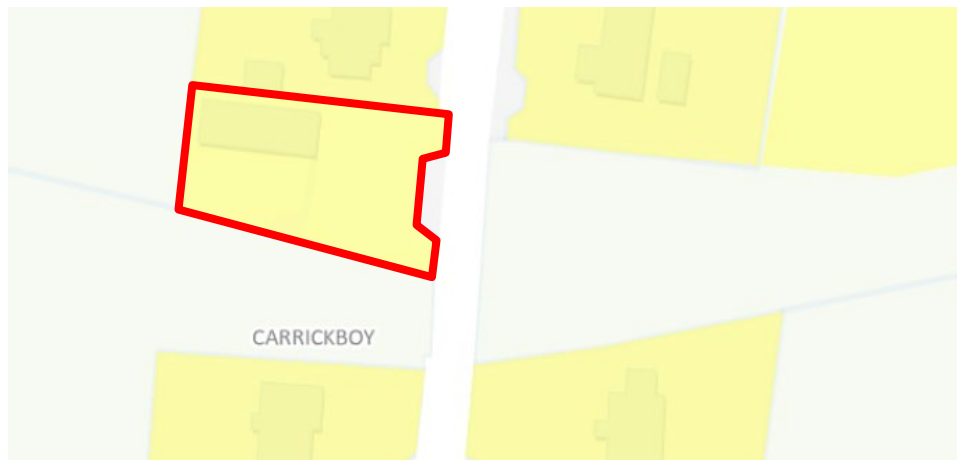
Ballyshannon



Land Parcel ID DLLA0000969 outlined in red above, located at **Rockville House, Ballyshannon** was incorrectly included on the local authority final map for 2025, following a determination to exclude the land parcel.

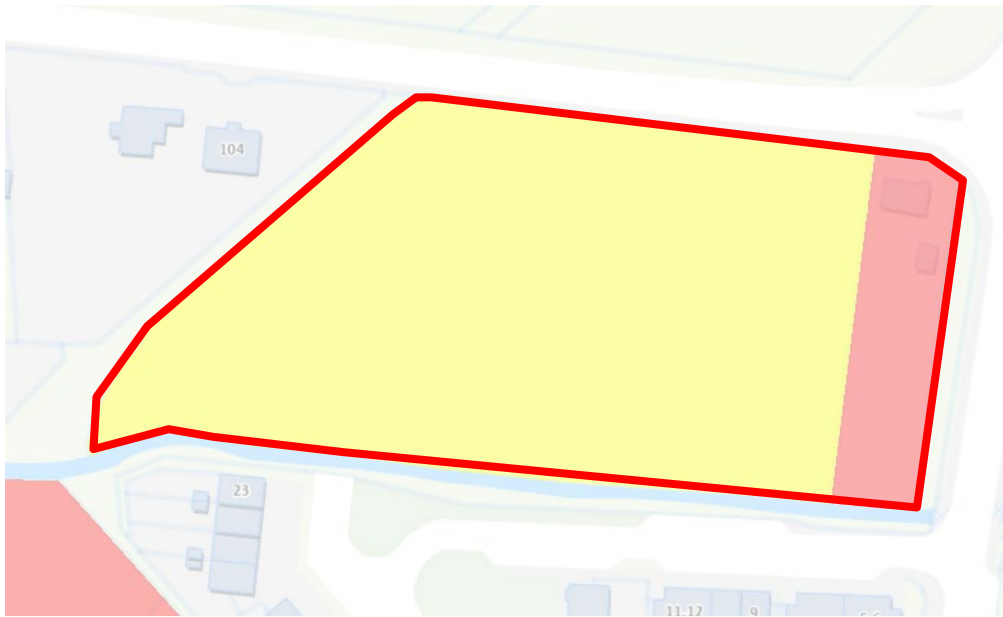


Land Parcel ID DLLA0000127C outlined in red above, located at **Station Field, Ballyshannon** was incorrectly included on the local authority final map for 2025, following a determination to exclude the land parcel.



Land Parcel ID DLLA0000201J outlined in red above, located at **Carrickboy, Ballyshannon** was incorrectly included on the local authority final map for 2025, following a determination to exclude the land parcel.

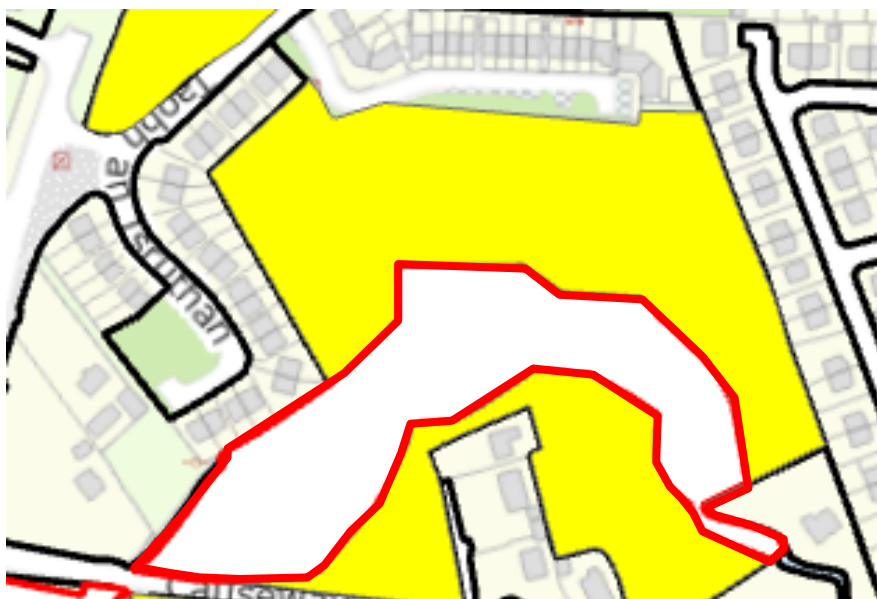
Buncrana



Land Parcels **DLLA0000216K** and **DLLA0000004** outlined in red above, located at **Ballymacarry, Buncrana**, were incorrectly included on the local authority final map for 2025. The subject lands do not meet the criteria for inclusion on the RZLT map.



Land Parcel **DLLA0000299** outlined in red above, located at **Ballymacarry, Buncrana**, was incorrectly included on the local authority final map for 2025. The subject lands do not meet the criteria for inclusion on the RZLT map.



Part of **Land Parcel DLLA0000205K**, as outlined in red above, located at **Ballymacarry and Ardaravan, Buncrana** was incorrectly included on the local authority final map for 2025. The subject lands do not meet the criteria for inclusion on the RZLT map.

Glenties



Land Parcel ID DLLA0000057 outlined in red above, located at **Main Street, Glenties** was incorrectly included on the local authority final map for 2025, following a determination to exclude the land parcel.

Letterkenny



Part of **Land Parcel DLLA0000191K**, as outlined in red above, located at **Glencar Irish, Letterkenny** was incorrectly included on the local authority final map for 2025. The subject lands do not meet the criteria for inclusion on the RZLT map.